

HOW TO MAKE A RUBBING:



FIND THE ETCHING ON THE STATION.



PLACE YOUR BROCHURE OVER THE ETCHING.



RUB ACROSS THE ETCHING WITH THE SIDE OF YOUR PENCIL.



ALL FINISHED! TIME FOR THE NEXT STATION!



Stations

- 1 *Out on a Limb* Tree Canopy Walk
- 2 Rose Garden
- 3 Oak Allée

VISIT ALL THREE STATIONS!

ART BY TOPPU MIYASHIRO



YOUR GUIDE TO TREE ADVENTURE

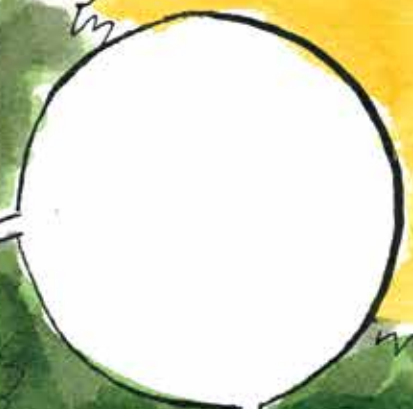
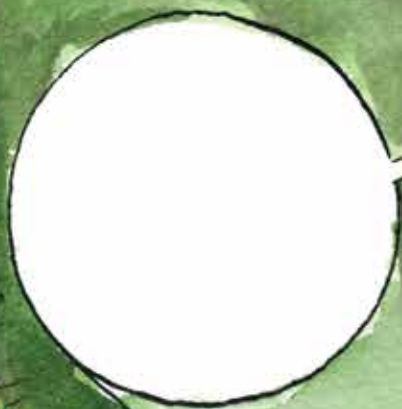


Morris Arboretum
UNIVERSITY OF PENNSYLVANIA

7.19.17M

TREES

ARE PART OF OUR NATURAL ENVIRONMENT AND PART OF OUR COMMUNITIES -- WE NEED TREES AND THEY NEED US TO PROTECT THEM!



LEAVES



TREE RINGS



ROOTS

