**Morris Arboretum**  
UNIVERSITY of PENNSYLVANIA  
100 East Northwestern Avenue  
Philadelphia, PA 19118


Non Profit Org.  
U.S. Postage  
PAID  
Jenkintown, PA  
Permit #58

Support provided by:  
  
*The Philadelphia*  
Cultural Fund



Photo this page: Ashley Angell, cover photo: Rob Cardillo

The Morris Arboretum is proud to print this Annual Report on FSC® (Forest Stewardship Council™) certified paper, which supports the growth of responsible forest management worldwide through its international standards.

**Morris Arboretum**  
UNIVERSITY of PENNSYLVANIA  
*Official arboretum of the Commonwealth of Pennsylvania*



# ANNUAL REPORT

JULY 2016 – JUNE 2017

 **Penn**  
UNIVERSITY of PENNSYLVANIA



# MISSION STATEMENT

**T**he Morris Arboretum of the University of Pennsylvania is a historic public garden and educational institution. It promotes an understanding of the relationship between plants, people, and place through programs that integrate science, art, and the humanities.

The Arboretum conducts four major activities: education, research, outreach, and horticultural display. As the official Arboretum of the Commonwealth of Pennsylvania, the Morris Arboretum of the University of Pennsylvania provides research and outreach services to state agencies, community institutions, and to citizens of Pennsylvania and beyond.

Photo: Paul W. Meyer

## DEAR FRIENDS,

**T**his past fiscal year capped a period of remarkable growth in serving the Arboretum's diverse constituencies. Overall, more than 142,000 people came to the Morris Arboretum for garden visits or programs. This is the third straight year of record overall attendance. We are especially proud that more than 43,000 of these visitors were youth, exposing them to the magical world of plants.

There was also dramatic growth in participation in formal education programs. These programs serve diverse audiences ranging from pre-school children to college students and practicing professionals. The total number of students served has grown more than 75% this past year as a result of our utilizing larger off-site venues for programs, and the expansion of our summer camp program. In addition to the summer campers, we again welcomed children from ACLAMO, a Norristown social service organization that provides educational programs and assistance to low income families in Montgomery County.

The Morris Arboretum School of Arboriculture also extended its reach this year. A total of 24 programs were presented, reaching more than 500 students. Most of the participants are practicing professionals who, through their daily work, have great impact on the quality, health, and safety of our urban forest, thereby affecting every resident of our region.

In fiscal year 2017 the Arboretum received a \$1.5 million grant from the National Science Foundation. This grant supports the important work of digitizing herbarium specimens and their associated data throughout the region. This data will inform analysis of the impact of urbanization on the changing flora of the region. This work greatly expands the Morris Arboretum's reach throughout the Mid-Atlantic region.

One downside of this growth is that our limited classroom, laboratory, and herbarium facilities are being used to capacity and parking is ever more frequently pushed into overflow. It is clear as we look forward, that additional and larger indoor spaces are essential, and improved access to public transportation is needed. Both of these needs are addressed in the Arboretum's master plan, including a proposed education and research center at Bloomfield Farm, and a pedestrian entrance on Germantown Avenue. The education center will provide a large event and lecture space serving 200 attendees, with three additional smaller classrooms. Also, a new herbarium, library, and laboratories are envisioned.

With more than 6,500 household members, robust support of annual giving, and a growing endowment, the Morris Arboretum has never been stronger or more engaged with the community. Over the past 40 years, the Arboretum has had a sound record of steady progress. Some years represent small steps, others bigger leaps. As we plan for a coming campaign, we will continue to build on our fiscal foundation while preparing for the big leap that will allow us to continue to grow our education programs and service to the community.

*Ellen Nalle Hass*

Ellen Nalle Hass, *Chair, Advisory Board of Managers*

*Paul W Meyer*

Paul W. Meyer, *The F. Otto Haas Executive Director*



Photo: Mark Stehle





# LIVING COLLECTION

The Arboretum is a museum of living plants, carefully managed and curated to fulfill the various aspects of its mission: research, education, display, and outreach. It is important to understand the process through which plants are acquired, propagated, and added to the living collection.

## ACQUISITION

The Arboretum is distinguished from other public gardens in the area by having a full-time propagator, propagation intern, and facilities dedicated to growing the results of plant collecting efforts. Plants are acquired in a variety of ways: some are purchased from nurseries, others are grown from seed from local and international sources, or they are produced through vegetative propagation by grafting or cuttings.

In pursuit of wild-collected seed of known provenance, during the past year, Arboretum staff participated in two international plant collecting expeditions. Director of Horticulture and Curator Tony Aiello (pictured below with Michael Dosmann of the Arnold Arboretum) traveled with colleagues to northern Sichuan Province, People’s Republic of China, while Chief Horticulturist Vince Marrocco joined an expedition to the Republic of Georgia (pictured above). Both expeditions enhanced the Arboretum’s holdings in a wide diversity of taxa.



Through relationships with other institutions, collecting efforts are leveraged through seed and plant exchange. For example, last year, the Arboretum received plants and seed collected in 21 states across the U.S., from Idaho to Minnesota and New York, and south to Georgia and Florida. Likewise, additional plants and seed that originated in China and the Republic of Georgia, as well as in Japan and Afghanistan, were acquired.

## PROPAGATION

Another method of building the collection is through vegetative propagation (grafting or taking cuttings). In these cases, the primary focus is on cultivated varieties, with a goal of building or expanding key aspects of the collection. Last year, long-term efforts continued to preserve and expand Japanese flowering cherries by propagating more uncommon trees, and by collecting several flowering cherry varieties at Brooklyn Botanic Garden. With an interest in expanding the collection of cold-hardy broadleaved evergreens, cuttings of camellia and osmanthus varieties have been obtained from Scott Arboretum and Longwood Gardens, and are currently being propagated.

## CULTIVATION

Each year, major plantings occur in both spring and fall that include plants grown in the Arboretum’s greenhouses from seed or cuttings, along with some plants that are purchased from nurseries. This past year, some of the highlights included plants from four expeditions to China (2005, 2008, 2010, and 2011) along with plants from expeditions to the Ozark Mountains and Virginia. Among these is a trial of live oaks (*Quercus virginiana*) that were propagated from acorns collected from several locations, including First Landing State Park in Virginia (pictured at right). These plants are now growing in the nursery at Bloomfield Farm.

## DISTRIBUTION

One of the primary functions of the Arboretum’s exploration and propagation efforts is to serve as a conduit to provide rare and unusual plants to as wide an audience as possible. As a result, plants are distributed to a diverse group of botanic gardens and private individuals. In the past fiscal year alone, several hundred plants were distributed from the Arboretum’s greenhouses with a significant number sent to Gainesway Farms (Lexington, KY), the U.S. National Arboretum, Green-Wood Cemetery (Brooklyn), Bayard-Cutting Arboretum (Long Island), the Chicago Botanic Garden, Longwood Gardens, and the Pennsylvania Horticultural Society Members Plant Dividend event.

## PUBLICATIONS

Another outcome of exploration and evaluation efforts is the dissemination of information about plants in the collection. This is done through interpretation, lectures, and professional publications. In the past year, Tony Aiello published articles on *Corylus fargesii* (Farges filbert) and *Tsuga chinensis* (Chinese hemlock) in *Curtis’s Botanical Magazine* along with an overview of several years of work on the *Acer griseum* (paperbark maple) conservation project in *The Plantsman*.



Photos: Anthony S. Aiello and Vince Marrocco

# COLLECTIONS AT A GLANCE


  
12,991  
Accessioned plants

  
2,572/310/95  
Taxa/genera/families

  
795  
Accessioned plants  
added or moved

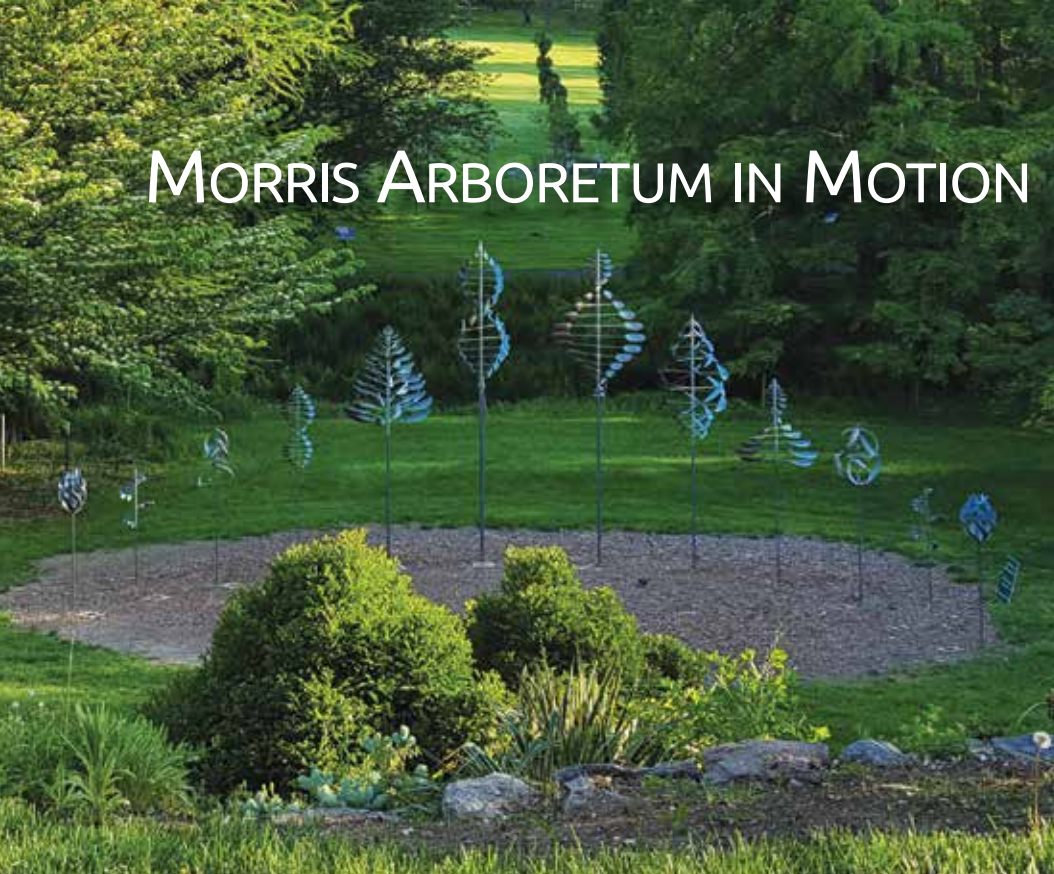
  
4,330  
Wild-collected plants

  
342  
Wild-collected additions

  
32  
Countries represented  
by wild-collected plants



# MORRIS ARBORETUM IN MOTION



Photos: Rob Cardillo, Al Goldman, Kevin Schrecengost

In April 2017, a new exhibit, *Morris Arboretum in Motion*, featuring more than 50 kinetic wind sculptures by artist Lyman Whitaker, debuted in the garden. Ranging in height from 5 to 27 feet tall, the pieces were installed in small groupings known as Wind Forests™, and made available for purchase to benefit Morris Arboretum.

The kinetic shapes are bold and distinctive, and are fabricated from copper, steel, and stainless steel, providing beauty and strength. When seen in motion, the wind sculptures create a mesmerizing effect for viewers. The exhibit was extended until the end of November due to its popularity and potential for additional sales. More information about Lyman Whitaker's work is available at [www.leopoldgallery.com](http://www.leopoldgallery.com).



## BOTANICAL RESEARCH

In September 2016, the Botany department was awarded an Advancing Digitization of Biological Collections (ADBC) grant from the National Science Foundation (NSF). Securing this support on the first try was largely a result of the hard work of botanical scientist Dr. Cindy Skema. This represents the first time in nearly 50 years that the Morris Arboretum has been so honored.

The \$1.5 million grant supports the Arboretum and 10 other partner institutions in a three-year effort to image, transcribe, and georeference data from about 700,000 herbarium specimens collected in the Mid-Atlantic region. The partners include The Academy of Natural Sciences of Drexel University, Delaware State University, Howard University, New York Botanical Garden, Rutgers University, Towson University, and the University of Maryland. Mid-Atlantic specimens at the following institutions will also be digitized: Maryland Department of Natural Resources, Muhlenberg College, and Staten Island Museum. In December, the Arboretum welcomed Anne Barber as Project Coordinator for this initiative. Anne previously held a similar position at the California Academy of Sciences in San Francisco. Anne is coordinating the project for all 11 institutions—a big job, indeed!



Photo: Amanda DeLeo

**\$1.5 million**

NSF grant received for Advancing Digitization of Biological Collections

**700,000**

Specimens from Mid-Atlantic region imaged, transcribed, and georeferenced

**30,000**

Specimens relocated and reorganized in the Arboretum Herbarium

The data mobilized in this effort will help provide a better scientific understanding of living urban systems, and the critical need for urban planners, restoration ecologists, environmental engineers, landscape architects, and conservationists engaged in creating more sustainable and better designed cities, including the constructed and restored natural environments of our urban areas.

Last fall, an infestation of drugstore beetles (*Stegobium paniceum*) was found among the specimens in the Morris Arboretum herbarium (MOAR). These pests can do serious damage, or even completely destroy, these irreplaceable scientific records. As a result, the entire collection (about 30,000 specimens) was packed up with the help of our wonderful Horticulture volunteers, and transferred to a large walk-in freezer for three months to ensure complete neutralization of all stages of the insect's life cycle. A generous gift from Arboretum friend Edith Dixon to renovate the Widener building allowed for the acquisition of new, air-tight herbarium storage cabinets, and the herbarium collection was reorganized to meet the latest botanical standards.

With a grant from Western Pennsylvania Conservancy, the Botany department also undertook an investigation of several plant species to determine their scientifically appropriate conservation status. The species involved in this study included *Ammannia coccinea* (toothcup), *Castilleja coccinea* (Indian-paintbrush), *Cuscuta polygonorum* (smartweed dodder), *Hieracium umbellatum* (Canada hawkweed), and *Itea virginica* (Virginia sweetspire). Pennsylvania is home to many species such as these, about which too little is known to be confident about the level of protection they should be afforded. Efforts will continue to identify these species and assign them the protection needed to assure their continued existence within Pennsylvania.



## ADULT EDUCATION



3,690

Participants in more than 180 courses, professional development programs, and lectures

11%

Growth in total program participation over FY16

\$233,626

Adult Education revenue—up 4% from FY16

## YOUTH EDUCATION



Photos: Bob Gutowski, Paul W. Meyer, Bryan Thompson-Nowak

7,321

Youth visits for education programs—up 3% from FY16

810

Youth visits with summer ACLAMO program

6

1,315

Square feet of Bloomfield Barn adapted for youth programs



Photos: Chelsea Melvin, Caroline Pape, Tiffany Stahl

## SUMMER PROGRAMMING

### LITTLE LIGHTNING BUGS AND BLOOMFIELD BUDDIES

It was a growing year for fun and learning at the Morris Arboretum this past summer! Summer Adventure Camp expanded from four to six weeks in 2017, and a new program, Little Lightning Bugs, was created for four and five-year-olds. Bloomfield Buddies, older campers between 6-10, were able to enjoy the unique setting of the Arboretum's newly renovated wing of the historic barn at Bloomfield Farm. Access to this new space allowed summer camp to double its enrollment. An adventure-packed summer included owl pellet dissections, Springfield Mills tours, nature crafts, DNA extractions, live animal presentations, terrarium workshops, field games, a camper concert during art and poetry jam week, and the capture and release of a few giant crayfish from our wetlands creek!



### EXPLORAR! SUMMER BRIDGE PROGRAM

Morris Arboretum piloted a summer program in partnership with ACLAMO Family Center in Norristown. Meant to keep children exploring and learning throughout the summer, the six weeks hosted 45 rising 1st-3rd graders on Wednesdays, and 45 rising 4th-9th graders on Tuesdays and Thursdays. These summer scholars heard stories of the Lenni Lenape at our *Waltz in the Woods* sculpture, uncovered the physics of Springfield Mills, and hiked everywhere in between. The program, including educator's salaries, supplies, and transportation, was funded by generous donors, and is the first of its kind at Morris Arboretum. The summer ended with families from both the Norristown and Pottstown ACLAMO centers coming to the Arboretum for student-led tours, soft pretzels, and water ice!

7



VISITATION



142,067  
Total visitors in FY17  
(new record)



56%  
Increase in visitors  
since FY08



43,000+  
Youth visiting the garden



1,685  
Highest number of visitors  
on one day—Easter Sunday



3,783  
Visitors using Penn  
Card for admission



10,000+  
Community outreach visits  
(i.e. partner schools, use of  
library garden passes, etc.)

Photos: Linda Berkson, Paul W. Meyer, Arnold Winkler



Photo: Daniel Fugaciu (www.danielweddings.com)

Whether traveling from out of town for a wedding, or from nearby West Philadelphia for a retreat, the rental program at Morris Arboretum introduces the Arboretum to people who may not have otherwise come to visit. In addition to welcoming new visitors, all revenue generated by the rental program supports the Arboretum’s bottom line. Fiscal year 2017 was another record-breaking year for rental revenue. No small part of this success is due to the growing recognition that the Arboretum is an amazing backdrop for events, big and small. Both here in town and across the country, word is spreading about what a special place the Morris Arboretum is for events.

63  
Couples tied the knot at  
Morris Arboretum last year

1 of 20  
Best garden venues in  
the country according to  
*WeddingWire*

\$380,000  
Total  
rental revenue

Photos: BG Productions, Paul W. Meyer







Photos: Paul W. Meyer, Morris Arboretum Archives

## REMEMBERING DORRANCE H. (DODO) HAMILTON

When Dodo Hamilton joined the Morris Arboretum's Advisory Board of Managers in 1988, she quickly got involved in the Horticulture Committee. In 1992, she began her 15-year tenure as Horticulture Chair, during which the Arboretum emerged from its days as a neglected, forgotten estate to the internationally recognized botanic garden that it is today. Under Dodo's leadership, the accessible path system was completed, gardens and fountains were restored, and the Alice and J. Liddon Pennock Garden was created.

Most important was the restoration of the Arboretum's Fernery, originally constructed in 1899. Dodo chaired the planning efforts for this project, and contributed \$1 million in 1993 as the lead gift for the restoration. The Fernery was dedicated as the Dorrance H. Hamilton Fernery in October 1994, ushering in an era of new possibilities at the Morris Arboretum.



The next year, looking down on the beautifully restored Fernery, Dodo noticed the nearby dilapidated greenhouses. She said it reminded her of Snow White and the ugly step sisters. Then she paused, smiled, and said, "We'll have to do something about that!" She soon led the effort to build new greenhouses at the Arboretum.

In 2002, during the planning for the Horticulture Center at Bloomfield Farm, a first step was the construction of the new entrance road and associated utility lines. Dodo agreed to provide the lead funding for this project, saying, "I like to take on critical projects like infrastructure that might lack broad appeal to other donors." Then, a few years later, she pledged another lead gift for the construction of the Horticulture Center.

Recently, Dodo remembered the Morris Arboretum with an estate gift for the Dorrance H. Hamilton Endowment which will help maintain the Fernery and adjacent greenhouses. Dodo was a dear friend and partner. She led the Horticulture Committee with a firm, but gentle hand, always looking to build collaboration and consensus. She expected quality and excellence, but always encouraged, rather than criticized. Her leadership at the Arboretum over a period of nearly three decades was truly transformational, and her vision and spirit continue to provide inspiration today.



# MARKETING



Photos: Amanda DeLeo, Bob Gutowski, Paul W. Meyer

## EXHIBIT SUCCESS WITH A NEW BUSINESS MODEL

This year marked the 20<sup>th</sup> year of the Garden Railway at the Morris Arboretum. To capitalize on that milestone, the search was on to find an exhibit that would complement the Garden Railway and tie into a theme of motion.

With the discovery of Lyman Whitaker, an artist who specializes in large-scale kinetic wind sculptures, an exhibit was planned, and *Morris Arboretum in Motion* became the spring/summer theme.

Partnering with the Kansas City gallery representing Lyman Whitaker, it was proposed that the artist’s entire collection of kinetic sculptures, including the 53 sculptures on exhibit at the Morris Arboretum, would be available for purchase. The Arboretum would receive 25% of all sales. Sales started off strong, and the exhibit also garnered press coverage from The Philadelphia Inquirer, CBS3, and 6ABC among other media.

## MOBILE AND ONLINE TOURS LAUNCHED

With a grant from the Pew Center for Arts & Heritage, Morris Arboretum launched *Awakening the Senses*, a series of online tours which families can use to plan their visits remotely and enhance their experience on-site. *Awakening the Senses* tours enable visitors to use their personal mobile devices as an interpretive tool in the garden. The tours impart information about the Arboretum’s plant collections, history, architecture, trees, and sculpture, and engage children with interactive games.

## MORRIS ARBORETUM LECTURES EXTEND REACH

Morris Arboretum lectures focus on plants, gardens, and landscapes, and feature speakers who provide insight on a variety of related arts and culture topics. Thanks to dedicated volunteer Jan Albaum and many staff members, lectures now frequently fill the largest room at the Arboretum which holds only 65 people. To accommodate increased interest, partnerships with nearby institutions were developed, including Ambler Theater and Temple University’s Ambler Campus. Both have auditoriums that can hold large audiences. Strong promotion, extensive press coverage, and effective use of social media helped to sell out lectures held at these off-site locations when noted author Andrea Wulf spoke at Ambler Theater, and environmentalist John Francis spoke at Temple-Ambler. Both lectures attracted more than 200 attendees.



## SOCIAL MEDIA - THERE’S NO ESCAPING IT!

If John Morris were alive today, he would be jumping with excitement too, as the Arboretum surpassed 11,000 Instagram followers. Social media’s reach continues to grow with strategic messaging. The positive results show up in increased interaction and sharing among followers, visitor attendance at an all-time high, increased wedding bookings and revenue, and sold out summer camp. Social media has become an essential tool in branding and marketing the Arboretum.

Instagram	Facebook	Twitter
87.8% increase for a total of 11,551 followers	21.2% increase for a total of 14,102 fans	13.7% increase for a total of 4,654 followers





# URBAN FORESTRY CONSULTING & OUTREACH

The Urban Forestry team supports the Morris Arboretum's educational mission by disseminating tree care knowledge and providing unbiased arboricultural consulting services and technical assistance to clients including municipalities, colleges, tree care companies, landscape architects, and businesses throughout the region.

The School of Arboriculture provides classes for a wide audience including arborists, allied professionals, and industry leaders. While the classes target people in these disciplines, the general public is always encouraged to attend to further their arboricultural knowledge.



Photo: Jason Lubar

Trish Kemper, a former Morris Arboretum intern (2015-2016), joined the team as Urban Forestry Technician. This position was added through an expanded partnership with the University of Pennsylvania's Division of Facilities and Real Estate Services Department (FRES). Trish is inventorying and assessing campus trees, and providing maps and other information to contractors to reduce tree-related risk. The consulting team is also crafting a University Tree Policy to address tree-related issues on campus, and updating information in the tree database which is accessible to the public through Penn's Plant Explorer website. A special concern is overseeing the management and care of the University's elm and ash trees, which are threatened by Dutch elm disease and emerald ash borer.

530

Students attended 24  
School of Arboriculture  
programs

85

Clients served by the Urban  
Forestry team in FY17

28%

Increase in consulting  
income over budgeted goal

This year, the team worked with Wilmington, Delaware's Public Works department to update the tree inventory and assessment data for selected areas in the city in order to provide accurate decision-making information about the city's trees. Approximately 1,300 trees were assessed or added/removed from the city's database.

At Swarthmore College, the team is helping protect trees during three ongoing construction projects, including preserving a mature oak located very close to new construction. Recommendations included soil decompaction, supplemental irrigation, treatment with growth regulators, and minimizing grading within the root zone. The college's tree-related policy was also revised, and a Heritage Tree Policy was crafted to identify and properly treat valuable campus trees.

High-quality, containerized native plants from local sources were also provided to Philadelphia's Parks and Recreation Department to meet restoration and programmatic needs, totaling about 1,100 trees and shrubs for the city.



Photo: Paul W. Meyer



Each year, Penn students are engaged and encouraged to visit the Arboretum as part of their student life. This year, new students were introduced to the Arboretum at New Student Orientation events, then again at the new class tree planting during homecoming weekend. More than 100 students visited the Arboretum last fall, and took part in the Korean Harvest Festival which showcased Penn student group performances throughout the day. More than 350 students visited in April, in large part due to complimentary buses which brought students to the Arboretum so they could enjoy the warm weather and celebrate the Japanese Cherry Blossom Festival. These activities are possible through the generous support of Bill (Wharton '74) and Kathie Hohns.



## PENN STUDENT OUTREACH



## AWAKENING THE SENSES

Walking through the Arboretum, visitors young and old can be seen with smartphones in their hands. Snapping selfies in the Rose Garden, taking photos of majestic trees, and web searching for plants and animals are a few of the ways visitors use their phones in the garden. This past year, new platforms were launched to take advantage of the growing number of smartphone users and connect them with fun, interactive, family-friendly activities through their mobile device.

One of the ways to capitalize on this new technology is through *Arboretum Adventure*, which invites users to explore the Arboretum with the help of five animal guides in iconic locations such as the Rose Garden and Fernery. Families are encouraged to bounce, buzz, and flap to different sections of the Arboretum, and once there, they can color flowers, plant acorns, and learn scientifically accurate lessons about plant and animal life, all on their phones.

*Arboretum Adventure* incorporates custom illustrations made specifically for this experience by local artist Todd Miyashiro, alongside content developed by Arboretum staff. This project was a part of the *Awakening the Senses* project funded by the Pew Center for Arts & Heritage to enable the Arboretum to experiment with mobile content and reach the Arboretum's audience in new and innovative ways. This program, along with other mobile tours, Wi-Fi hotspots, and an online plant collection database are all new ways mobile technology is being utilized to enhance and improve the visitor experience.

## SUSTAINABILITY INITIATIVES

When the University of Pennsylvania launched its Climate Action Plan 2.0 in the fall of 2014, its carbon and energy goals aligned with the longer term goal of carbon neutrality by 2042. Morris Arboretum is committed to sustaining its natural resources. The 167-acre Arboretum property is a collection of demonstrations exhibiting stewardship of different kinds of landscapes.

In the past year, great strides were made in sustainable upgrades to utilities and operations. The substantial investments required for these upgrades will pay for themselves in 6 to 14 years.



Photos: Paul W. Meyer

**220**  
Upgraded LED lights  
(interior and exterior) will  
generate a 36% savings  
each year

**5**  
New heating and hot  
water systems installed,  
which operate at 86-95%  
efficiency

**8**  
Air conditioning units  
replaced to provide energy  
reduction of up to 47%

## VOLUNTEERS



The Morris Arboretum is grateful for the service of its loyal volunteers. The volunteer corps blend seamlessly into the Arboretum, contributing significantly to daily operations. In turn, volunteers are given opportunities to learn, experience the garden, socialize, and grow. Volunteers also connect with the community by helping fulfill the Arboretum's mission and becoming stewards of their environment.

- Volunteers assist in all areas of the Arboretum including:
- |                                     |  |
|-------------------------------------|--|
| Advisory Board of Managers          | Garden Railway                         |
| Archives                            | Greenhouse                             |
| Botany                              | Guides                                 |
| Departmental Board level committees | Horticulture                           |
| Development                         | <i>Moonlight &amp; Roses</i> committee |
| Directors' Guild                    | Run of the Millers                     |
| Events/Plant Sale                   | Visitor Services                       |

**285**  
Active Arboretum  
Volunteers

**13,545**  
Volunteer hours  
contributed

**6.7**  
Full-time staff equivalent



# ENDOWMENTS

Alan T. and Marjorie Miller Arboriculture Endowment  
 Alice and Liddon Pennock Flower Walk and Intern Endowment  
 Anne C. Highland Natural Areas Endowment  
 Barry W. Jeffries Historic Landscape Education Endowment  
 Byron & Elizabeth Lukens Lecture Endowment  
 Charles S. Holman Jr. Rose Garden Intern Endowment  
 Charles S. Holman Jr. Key Fountain Endowment  
 Charlotte Shepherd Meigs Endowment  
 Children’s Education Endowment  
 The Compton Fund  
 Curatorial Endowment  
 Dorrance H. Hamilton Fernery Endowment  
 Eli Kirk Price Botany Intern Endowment  
 Elizabeth P. McLean Mercury Loggia Endowment  
 Equipment Replacement Endowment  
 Fine Art Conservation Endowment  
 F. Otto Haas Executive Director’s Chair Endowment  
 F. Otto Haas Facility Maintenance Endowment  
 F. Otto Haas Oak Allée Endowment  
 Garden Railway Endowment  
 The Gayle E. Maloney Director of Horticulture Endowment  
 The Gayle E. Maloney Garden Endowment  
 The Gayle E. Maloney Plant Exploration Endowment  
 The Hay Honey Farm Horticulture Intern Endowment  
 Hiram Munger Hill & Cloud Garden Endowment  
 Historic Preservation Endowment  
 Horticulture Center Endowment (1)  
 Horticulture Center Endowment (2)

Photo: Lori Schimpf



Joanna McQuail Reed Herb Garden Endowment  
 John C. Plunkett Botany Research Endowment  
 John J. Willaman Director of Botany Endowment  
 John J. Willaman and Martha Haas Valentine Intern Endowment  
 Joseph Shuttleworth Garden Railway Endowment  
 Llewellyn J. Griffiths Endowment  
 Lucille R. Roland Garden Endowment  
 Lydia Morris Trust  
 Madeleine K. Butcher Fine Arts Endowment  
 Martha S. Miller & Rusty Miller Urban Forestry Intern Endowment  
 Martha J. Wallace Plant Propagation Intern Endowment  
 Martha J. Wallace Staff Compensation Endowment  
 Mary P. and Richard W. Graham Natural Areas Endowment  
 McCausland Natural Lands Horticulturist Endowment  
 McLean Education Internship Endowment  
 McLean Endowment for Staff Compensation and Development  
 Medicinal Plant Garden Endowment  
 Mildred R. Montgomery Trust  
 Morris Arboretum First Century Fund  
 Morris Arboretum Internship Program Endowment  
 Moses & Susan Feldman Natural Areas Section Leader Endowment  
 National Endowment for the Humanities  
 Out On a Limb Tree Adventure Endowment  
 Paul W. Meyer & Debra L. Rodgers Study-Travel Endowment  
 Paul W. Meyer & Debra L. Rodgers Historic Preservation Endowment  
 Plant Exploration, Evaluation, and Introduction Endowment  
 Steven D. Murray Metasequoia Grove Endowment  
 Steven Laden Marketing Endowment  
 Sue & Michael Young Education Fund  
 Taylor Woodland Endowment  
 Toshiko Takaezu Bell Endowment  
 Walter W. Root Arborist Intern Endowment  
 William Klein Lectureship Endowment  
 William Penn Foundation Endowment for General Operating Support

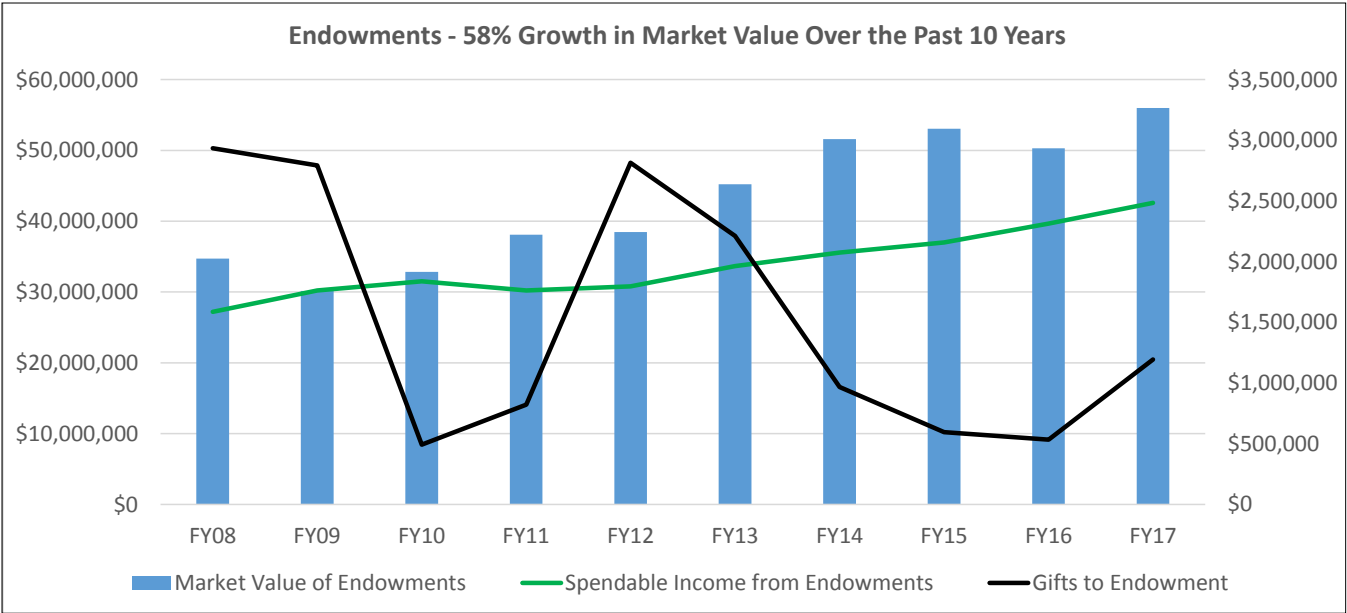


Photo: Paul Meyer







# FINANCIAL REPORT 2016-2017

## Income

	Total Operating
--	-----------------

<b>Earned Revenue (29.7% of Total)</b>	
Plant Sale	78,094
Garden Admission Fees	386,244
Facilities Rentals	405,043
Course Fees	268,487
Member Events	323,279
Basic Memberships	480,485
Consulting Contracts	432,771
University Teaching	57,016
Royalties	33,009
Gift Shop Sales	124,396
<b>TOTAL EARNED REVENUE</b>	<b>2,588,824</b>

<b>Contributed Revenue (23.5% of Total)</b>	
Foundations	158,681
Premier Memberships	183,168
Annual Giving	702,131
Other (Project Gifts/Overhead)	1,011,620
<b>TOTAL CONTRIBUTED REVENUE</b>	<b>2,055,600</b>

<b>Investment Revenue (28.5% of Total)</b>	
Morris Trust – Operating	328,054
Compton Fund, Other	163,308
University-managed Endowments	1,992,243
<b>TOTAL INVESTMENT REVENUE</b>	<b>2,483,605</b>

<b>Government Support (1.3% of Total)</b>	
National Science Foundation	114,057
<b>TOTAL GOVERNMENT SUPPORT</b>	<b>114,057</b>

<b>University Support (12.3% of Total)</b>	
Salary	194,013
Subvention	883,331
<b>TOTAL UNIVERSITY SUPPORT</b>	<b>1,077,344</b>

<b>Miscellaneous (4.7% of Total)</b>	
Transfers – Internal Loans	271,000
Transfers – Miscellaneous	140,970
<b>TOTAL MISCELLANEOUS</b>	<b>411,970</b>

<b>TOTAL REVENUE</b>	<b>\$ 8,731,400</b>
----------------------	---------------------

## Expenses

	Total Operating
--	-----------------

<b>Salaries &amp; Benefits</b>		4,418,138
<b>Program Expenses</b>		
Botany		246,803
Horticulture		560,253
Education & Visitor Experience		666,086
Facilities		846,053
Development		257,902
Marketing		127,171
Administration		257,698
University		899,404

<b>TOTAL EXPENSES</b>	<b>\$8,279,508</b>
-----------------------	--------------------

<b>CHANGE IN NET ASSETS +/-</b>	<b>\$451,892</b>
---------------------------------	------------------

<b>Balance Sheet Activity</b>	
Internal Loan (BSD – Widener)	(71,000)

<b>CUMULATIVE CHANGE IN NET ASSETS</b>	<b>\$380,892</b>
--	------------------

Photo: Paul W. Meyer



## PHILANTHROPY & GIVING



Photo: Chelsea Melvin

The Arboretum is deeply grateful for the generous financial support of its community of members, donors, and friends. More important than the value of these gifts is knowing that each contribution—whether \$5 for the Annual Fund or \$500,000 for a capital project—represents a profound statement of support for the Arboretum’s mission of promoting awareness and protection of the natural world.

Fiscal Year 2017 marked the strongest year ever for the Annual Fund, which generated more than \$700,000 in contributions. Other sources of annual giving, including membership and the annual *Moonlight & Roses* gala, raised an additional \$945,000, bringing total unrestricted contributed revenue in FY17 to more than \$1.6 million. Fiscal Year 2017 also brought in more than \$1 million in bequests, helping to further strengthen the Arboretum’s endowments, whose income generates nearly one-third of the Arboretum’s annual operating budget.

Major gifts in FY17 supported an array of projects: the refurbishment of the Widener Visitor Center, special support for horticultural efforts—including the trail restoration project, the Rose Garden perimeter project, and plant propagation—plus generous gifts to the Botany and Plant Sciences funds.

\$4.5 million

Received from 6,500 gifts to the Arboretum this year (\$1 million over goal)

\$700,000

Given in Annual Fund contributions (Strongest year ever)

\$1.6 million

Raised in total unrestricted giving

A number of contributions were received this year in support of education and outreach efforts. Special gifts were made to the Youth Education Endowment, as well as renewed multi-donor support for the second year of the *Explorar!* Summer Bridge Program, a partnership with ACLAMO Family Services in Norristown, PA that provides a summer of exploration and fun for underserved children (ages 8-14) at the Arboretum.

In Fiscal Year 2017, Paul W. Meyer, *the F. Otto Haas Executive Director*, marked 40 years of service. This milestone was celebrated with great generosity by nearly 120 donors who contributed almost \$250,000 to establish the Paul W. Meyer & Debra L. Rodgers Endowment Fund for Historic Preservation—a fitting cause that has been a central theme of progress at the Arboretum throughout Paul’s decades of service.

All told, special gifts were made to more than 50 discrete, mission-driven project funds this fiscal year, recognizing the Arboretum as a precious local gem, an official statewide resource, a national model for botanic gardens, and an international repository for botanical research. The Arboretum’s donors and members have made all of this, and more, possible through their unwavering support and commitment to the protection and preservation of the natural world.



## LEADERSHIP GIFTS AND PLEDGES

The Morris Arboretum is grateful to the following individuals who have provided generous operating, programmatic, and/or capital support through new gifts, pledges, or pledge payments totaling \$2,500 or more in Fiscal Year 2017.

### \$500,000 AND ABOVE

Edith Robb Dixon

### \$250,000–\$499,999

Anonymous  
Dorrance H. Hamilton†  
Lehman E. Kapp Jr.†  
Henry S. Miller Jr.†

### \$100,000–\$249,999

Joan Citron  
Susan & Moses Feldman  
Jane & Leonard Korman  
Evamarie Malsch  
Mary D. Starr

### \$50,000–\$99,999

Gwen & Edward Asplundh  
Janet & John Haas  
Jane MacElree  
Susan & Robert Peck  
Rebecca M. Shuttleworth

### \$25,000–\$49,999

George W. Connell  
Joanie & Murray Goodman  
Pamela & James Hill  
Kathlene & William Hohns  
Frances & James Maguire  
Ann & Frank Reed  
Debra L. Rodgers & Paul W. Meyer  
Martha J. Wallace & Edward W. Kane  
Minturn T. Wright  
Patricia & Clarence Wurts

### \$10,000–\$24,999

Jane & Abass Alavi  
Jessica Berwind  
Betty K. Davis†  
Philippe de Spoelberch  
Jessie R. Deming & Robert A. Boyer  
Lisa M. Gemmill  
Carole Haas Gravagno  
Thomas W. Haas

Kathy & William Harral III  
Penelope P. Harris  
Meg & Richard Hayne  
Elizabeth W. Heimbach  
Jessie B. Hill & Ming Fang  
Augusta Leininger  
Marguerite & Gerry Lenfest  
Sarah & Ted Lodge  
Bonnie & Peter McCausland  
Elizabeth P. McLean  
Hiram H. Munger  
J. Kenneth Nimblett  
David T. Orthwein  
Aileen & Brian Roberts  
Elizabeth & Kyle Salata  
Elizabeth & John A. H. Shober  
Robert S. Warth  
Susan Wexler†  
Sue & Michael Young

### \$5,000–\$9,999

Barbara & Philip Albright  
Anonymous (2)  
Hali & Scott Asplundh  
Barbara & John H. Ball  
Cathleen & Robert Bartlett  
Barbara Berkowitz  
Joan & George† Brantz  
Marcia & Ross Campbell  
Carol A. Dolinskas  
Phoebe A. Driscoll  
Elizabeth B. Farley  
Barbara Fricker  
Eleanore & Christopher Gadsden  
Linda & David Glickstein  
Ellen & Jay Hass  
Christine James  
Karen & Richard Kadison  
Janet & H. Lewis Klein  
Lee Laden  
Mary Lane & Robert Durham  
Terry Marek & Peter Buttenwieser  
Sandra L. McLean  
Lorna & Lathrop Nelson  
Maris Ogg & Robert Smith  
Joan S. Root

Louise A. Root Melby  
Barbara & James Smith  
R. William Thomas

### \$2,500–\$4,999

Cynthia & John Affleck  
Jan Albaum & Harry Cerino  
Jody Appell  
Beatrice Bast  
Mary Pat & Thomas Boyle  
Emilie R. Bregy  
Rebecca W. Bushnell & John D. Toner  
Annabelle & Doug Canning  
Jeanne & Philip Connolly  
John R. Crompton†  
Regina Davidson  
Jane & Walter Evans  
Felice Fischer  
Joseph P. Flanagan Jr.  
Susan & Robert Fleming  
Wendy & Walter Foulke  
Christina & Dean Fournaris  
Irma & Christopher Fralic  
Nancy & William H. Frederick Jr.  
C. Meade Geisel Jr.  
Deborah E. Glass  
Mary & Richard Graham  
Elizabeth & Henry Harris Jr.  
Lynda & W. Anthony Hitschler  
Carol & James Hovey  
Emilie & Peter Lapham  
Elizabeth & Robert Lukens  
Nancy Louise Miller  
Hope & James Morrissey  
Ruth Van Sciver Peckmann  
George L. Popky  
Leah & Herbert Riband Jr.  
Gretchen & J. Barton Riley  
Nina & Eric Schneider  
Elizabeth Van Vleck  
Camilla & William Whetzel  
Ana-Maria Zaugg & David Anstice

† *Deceased*

## GIFTS TO ENDOWMENTS AND SPECIAL PROJECTS

The Morris Arboretum acknowledges the donors who have made gifts to endowments, programs, and/or special projects in the amounts of \$250–\$2,499 and have not been acknowledged on the Leadership Gifts and Pledges list on the previous page.

Joan & Robert Anderson  
Anonymous  
Roberta L. Berg  
Ruth & Tai Chang  
Katharine T. Claghorn  
Bruce & Rebecca Conrad  
Emily & Edward Daeschler  
Ellen W. Decker  
Donna A. Delany  
Janet Etzi Berger  
Christa & William Farnon  
Charlotte T. Feldman  
Joseph C. Fitzgerald  
Eugenie & John Flaherty  
Robert Friedman  
Elinor I. Goff  
Lynn & Ralph Haber  
Suzanne & Crawford Hill III

Natalie & Ralph Hirshorn  
Ann D. Hozack  
Ann & Steven Hutton  
Barry W. Jeffries  
Diane & William Knox  
Julia B. Leisenring  
Veronica & Rick Lewandowski  
Sally & Richard Lighty  
Eleanor P. Lloyd  
Elizabeth Ray McLean  
Gail D. Miller  
Sharon & J. Christopher Miller  
Susan & Washburn Oberwager  
William J. Otto  
Jane G. Pepper  
Joan Reilly & Michael DiBerardinis  
Lucretia Robbins  
Claire Sawyers

Nina & Eric Schneider  
Dorothea & Donald† Schnorr  
Evelyn Price Scott  
Janet & Georg Simon  
Pam & Michael Sharp  
Joly W. Stewart  
Barbara & Leonard Sylk  
Maria & Radclyffe Thompson  
Tonia Uffner  
Maureen Ward & Elie-Antoine Atallah  
Deborah & Andrew Webster  
Quentin M. White  
Marie D. Witt  
Lenore & Albert Zimmermann

† *Deceased*

Photo: Paul W. Meyer





THE COLLECTORS CIRCLE

The Collectors Circle is a group of individuals who give \$2,500 or more to the Annual Fund. Their commitment provides organizational strength and capacity for the Morris Arboretum. This list acknowledges donors who made new gifts or pledge payments in Fiscal Year 2017.

\$50,000 AND ABOVE

Susan & Moses Feldman

\$25,000–\$49,999

Anonymous  
Pamela & James Hill  
Jane MacElree  
Frances & James Maguire  
Ann & Frank Reed  
Mary D. Starr  
Martha J. Wallace & Edward W. Kane

\$10,000–\$24,999

Jessica Berwind  
Edith Robb Dixon  
Lisa M. Gemmill  
Thomas W. Haas  
Penelope P. Harris  
Meg & Richard Hayne  
Jessie B. Hill & Ming Fang  
Augusta Leininger  
Marguerite & Gerry Lenfest  
Sarah & Ted Lodge  
Bonnie & Peter McCausland

David T. Orthwein  
Susan & Robert Peck  
Aileen & Brian Roberts  
Debra L. Rodgers & Paul W. Meyer

\$5,000–\$9,999

Anonymous (2)  
Gwen & Edward Asplundh  
Hali & Scott Asplundh  
Cathleen & Robert Bartlett  
Barbara Berkowitz  
Marcia & Ross Campbell  
Jessie R. Deming & Robert A. Boyer  
Carol A. Dolinskas  
Elizabeth B. Farley†  
Karen & Richard Kadison  
Janet & H. Lewis Klein  
Jane & Leonard Korman  
Mary Lane & Robert Durham  
Elizabeth P. McLean  
J. Kenneth Nimblett  
Elizabeth & John A. H. Shober  
Barbara & James Smith

\$2,500–\$4,999

Cynthia & John Affleck  
Jane & Abass Alavi  
Jan Albaum & Harry Cerino  
Beatrice Bast  
Mary Pat & Thomas Boyle  
Rebecca W. Bushnell & John D. Toner  
Annabelle & Doug Canning  
Jeanne & Philip Connolly  
Regina Davidson  
Phoebe A. Driscoll  
Jane & Walter Evans  
Joseph P. Flanagan Jr.  
Wendy & Walter Foulke  
Christina & Dean Fournaris  
Irma & Christopher Fralic  
Eleanore & Christopher Gadsden  
C. Meade Geisel Jr.  
Linda & David Glickstein  
Mary & Richard Graham  
Ellen & Jay Hass  
Carol & James Hovey  
Christine James  
Emilie & Peter Lapham  
Barbara L. Lippman  
Elizabeth & Robert Lukens  
Sandra L. McLean  
Nancy Louise Miller  
Hope & James Morrissey  
Leah & Herbert Riband Jr.  
Gretchen & J. Barton Riley  
Elizabeth & Kyle Salata  
Nina & Eric Schneider  
Rebecca M. Shuttlesworth  
Elizabeth Van Vleck  
Camilla & William Whetzel  
Patricia & Clarence Wurts  
Ana-Maria Zaugg & David Anstice

† Deceased

Photo: Kate Deregibus

ANNUAL FUND DONORS

The Annual Fund is a significant source of support for the Arboretum’s annual operating budget. This list acknowledges individuals who have made new gifts or pledge payments in Fiscal Year 2017 of \$250 - \$2,499. Annual Fund donors of \$2,500 or more are members of the Collectors Circle and are acknowledged on the previous page.

\$1,000–\$2,499

Anonymous  
Nancy & David Barclay  
Andrea J. Becker & Milton E. Coll  
Roberta L. Berg  
Emilie R. Bregy  
Mary Chomitz & Morton Collier  
Emily & Edward Daeschler  
Alexandra Edsall & Robert Victor  
Felice Fischer  
Susan & Robert Fleming  
Nancy & William Frederick  
Elizabeth H. Gemmill  
Elizabeth C. Heath  
Henry S. McNeil Jr.  
Marion Benson Miller  
Hiram H. Munger  
Ruth Van Sciver Peckmann  
Jane G. Pepper  
Cornelia Schaefer  
Linda & Charles Schelke  
Marcia & Leon Steinberg  
David Van Ness Taylor  
Robert Thurston  
Maureen Ward & Elie-Antoine  
Atallah  
Ethel Wetherill  
Mira Zergani & Antonio Quiles

\$500–\$999

Leonard Aulenbach & Paul McKelvie  
Kristin & James Biddle  
Sherry Carr  
Ruth & Tai Chang  
Gloria T. Chisum  
Anne Louise & Livio Ciaralli  
Lynne Clark  
Mary & Edward Cloues  
Linda C. Corson  
Eugenie & John Flaherty  
Doreen L. Foust  
Penny & Robert Fox  
Philip Greenwald  
Warne P. Johnson†  
F. Peter Kohler  
Linda & William Koons  
Sallie & Bert Korman  
Ann Lovitt & Andrew Czulewicz  
Janet & John Moyer  
Marcia & Ronald Rubin  
Jeanette Russell  
Bonnie & Peter Schorsch  
Lucy Bell Sellers  
Paula & Mark Solomon  
Leslie & Stephen Weisser

\$250–\$499

Claire & John Alexander  
Sheila† & Antonio Ano  
Jennifer Babineaux & Douglas  
Knauer

Charlotte C. Betancourt  
Mary B. Coe  
Ann Csink & John Linck  
Elizabeth Glatfelter  
W. Martin Harrell  
Cynthia M. Harrison  
Mary & Edward Herman  
Kathryn Hodgkiss  
Mary R. Hopkins  
Pemberton Hutchinson  
Annabelle P. Irey  
Barry W. Jeffries  
Barbara & John Kimberly  
Jennifer & Matthew King  
Korin & Larry Korman  
Winifred Lanoix & David  
Kannerstein  
Marilyn & Stephen Leonard  
Gail D. Miller  
Alison & Alexander Nalle  
Arabella & James Pope  
Susan & Peter Stanley  
Joly W. Stewart  
Elizabeth Morrow Urffer  
Loren J. Vosika  
Nancy & John Williams  
Oliver P. Williams  
Marilyn & George Wills  
Catherine A. Worrall  
Minturn T. Wright III

† Deceased





Photos: Amanda DeLeo, Paul W. Meyer

# LEADERSHIP MEMBERS

Membership revenue is an important source of unrestricted operating income for the Morris Arboretum. All members contribute to the organizational strength with their membership dues. The individuals listed below have distinguished themselves by joining at the highest levels of membership.

LAUREL (\$1,000)

Barbara & Philip Albright  
Leonard Aulenbach & Paul McKelvie  
Rebecca Bien & David Poll  
Harry S. Cherken Jr.  
Mary Chomitz & Morton Collier  
Mary & Anthony Creamer  
Henry E. Crouter  
Suzanne & George Downs  
Pauline Gray & Edward S. Barnard  
Natalie & Ralph Hirshorn  
Lynda & W. Anthony Hitschler  
Ann D. Hozack  
Norman James  
Susan & William Learnard  
Evamarie Malsch  
Susan & Washburn Oberwager  
Arabella & James Pope  
Janet & Matthew Stern  
Joly W. Stewart  
R. William Thomas

OAK (\$500)

Claire & John Alexander  
Dorothy & Andrew Allison  
Katherine A. Behan & Katherine D. Sherif  
Roberta L. Berg

Charlotte H. Biddle  
Kristin & James Biddle  
Mary Jo & Jeffrey Buckwalter  
Jenny Rose & H. Augustus Carey  
Ruth & Tai Chang  
Ellen & Michael Colibraro  
Linda C. Corson  
Pamela & Christopher Davis  
Karren & Edward DeSeve  
Anne & Willis Dibble  
Gene & Charles Dilks  
Mary C. Disston  
Ellin Dixon Miller & Bruce M. Miller  
Susan & Robert Fleming  
Sandra & Thomas Greenwood  
Elizabeth & Henry Harris Jr.  
Ann & Steven Hutton  
Elaine Klein & Craig Wallentine  
F. Peter Kohler  
Linda & Alfred Kuffler  
Mary & Stephen Kurtz  
Terry Marek & Peter Buttenwieser  
Evelyn & John McNiff  
Lee & Alan Miller  
Carolyn & David Montgomery  
Catherine & Hugh Moulton  
Hiram H. Munger

Kathleen Nelson & John Kromer  
Lorna & Lathrop Nelson  
Diane Newbury & Steven P. Berman  
Ruth Van Sciver Peckmann  
Kristine & Eric Robinson  
Judith & Rick Rodes  
Theresa & John Rollins  
Jeanette Russell  
Lucy Bell Sellers  
Susan & Michael Selverian  
Cynthia & James Sillhart  
Louisa Spottswood & Robert Coughlin†  
Bayard T. Storey  
Maria & Radclyffe Thompson  
Ethel Wetherill

HOLLY (\$250)

Martha & Williams Agate  
Sheila† & Antonio Ano  
Valerie Arkoosh & Jeffrey Harbison  
Patricia Bailey & Richard Murray  
Donna & Louis Beardell  
Elizabeth Bently  
Jane Berger & Bill Seltzer  
Audrey & John Eveloff Berman  
Rita & Joseph Beyer  
Marie & Peter Bowers

Margaret Bradley  
Joan & George Brady  
Amy Branch & D. Jeffrey Benoliel  
Penelope Brodie & George Corson  
Frank W. Brouse  
Mary V. Burke & Craig S. Harnitchek  
Gretchen F. Carey  
Joseph S. Christy  
Monica Clements  
Amy & Sean Coleman  
Carol & Richard Collier  
Denise Connerty & Geoffrey Gee  
Diana & James Cosgrove  
Bea Cromwell  
Emily & Edward Daeschler  
Constance S. Dee  
Karen & Christopher Dinan  
Laura & Mark Dingfield  
Caryn Douma & Eric Eichenwald  
Ruffian & Kyle Dunleavy  
Andrea Durison-Clark & Richard Clark  
Steven B. Erisoty  
Alice & Richard Farley  
Charlotte Feldman  
Lois & Douglas Fischer  
Kimberly & William Freeman  
Kristine & Robert Frisbie  
Eve & Leonard Gottesman  
Susan & Arthur Hankin  
Susan & Robert Harries  
Susan & W. Henry Harrison  
Monika Hemmers & Stephen Heimann  
Elizabeth W. Heimbach  
Elaine Heist  
Gail & Peter Hollenbeck  
Mary R. Hopkins  
Pony & Mark Hopkins

Andrea & Paul Horos  
Helen & John Horstmann  
Thomas Hyndman  
Eileen & Ronald Javers  
Ronald Javitch  
Judith Johnston Wexler  
Rachelle & Ronald Kaiserman  
Anne & Matthew Keil  
Sharon & Vernon Kelly  
Barbara & John Kimberly  
Melissa O. Koussis & S. Stacy Mogul  
Judith & Morton Langsfeld  
Julia B. Leisenring  
Louise M. Lisi & Burton S. Froom Jr.  
Betty Litsinger & James Craig  
Eleanor P. Lloyd  
Diana J. Mackie  
Rose Marie McCabe  
Diane & Seth McDowell  
Lisa & John McGill  
Jeanne L. McMindes & Joseph T. Conahan  
Anne McNally & Joseph Pie  
Jean Plante McNelis  
Dawn & Larry Mendte  
Karen Miller & Graham Brent  
Tara & Warren Miller  
Erin & Kevin Monaghan  
Alison & Alexander Nalle  
Douglas Nixon & Lou Gatti  
Margaret & Gerald O'Neill  
Nicole & Robert Pasquarello Jr.  
Sarah & Michael Peterson  
Barbara & Bruce Powers  
Jeanne & Clair Raubenstine  
Timothy G. Reekie  
Mary Ellen Reilly  
Jane & Robert Rivera  
Nicole & Samuel Rhoads  
Patricia & Robert Rodgers Sr.

Elizabeth & Harvey Rubin  
Jane M. Ruffin  
Ann & Christopher Schiele  
Ellen Lea & Dale Schilling  
Laurie & William Schutt  
Karen & Robert Sharrar  
Robert Shusterman  
Taylor & Frank Slaughter  
Nicole & Laurence Snyder  
John J. Soeffing  
Tamar & Phillip Stern  
Candace & John Stoudt  
Barbara & Leonard Sylk  
David Van Ness Taylor  
Linda & Keith Thomson  
Jennifer & Brien Tilley  
Jennifer Torpie & Germain DeSeve  
Carmen Torres Rodriguez & Richard Kohlhepp  
Elizabeth Morrow Urffer  
Cynthia H. Walker  
Margaret & Robert Wallis  
Anne Walsh & Donato Daddario†  
Maureen Ward & Elie-Antoine Atallah

Susan Kay Weiler  
Susan & David West  
Quentin M. White  
Wendy Willard  
Elizabeth Williams  
Sheila & Erik Williams  
Anne & John Wilson  
Marie D. Witt  
Margaret Diana Wood  
Catherine A. Worrall  
Minturn T. Wright III  
Rebecca & David Yuhas  
Suzanne Zeleznik & David Smith  
Lenore & Albert Zimmermann

† Deceased

## MEMBERSHIP AT A GLANCE

6,516  
Active member households

11,896  
Adult members

34 of 50  
States represented by Arboretum members

7,417  
Child members







# CORPORATE, FOUNDATION, GOVERNMENT AND NON-PROFIT DONORS

Photos: Paul W. Meyer

The Morris Arboretum is grateful to the following corporations, foundations, government agencies, and non-profit organizations who have provided generous operating, programmatic, and/or capital support through new gifts, pledges, or pledge payments totaling \$250 or more in Fiscal Year 2017.

\$250,000 AND ABOVE

Dorrance H. Hamilton 3/15/96 10-yr  
Annuity Trust  
Summerhill Charitable Remainder

\$100,000–\$249,999

Jane & Leonard Korman Family  
Foundation  
Moses Feldman Family Foundation

\$50,000–\$99,999

The CHG Charitable Trust  
Jane C. MacElree Family Foundation  
Otto Haas Charitable Trust

\$25,000–\$49,999

Edward W. Kane & Martha J.  
Wallace Family Foundation  
The Haverford Trust Company

The Maguire Foundation  
The Marshall-Reynolds Foundation  
Pew Center for Arts & Heritage

\$10,000–\$24,999

Drexel Morgan & Company, LLC  
Fondation Franklinia  
The Hamilton Family Foundation  
Kittyhawk Revocable Trust Charitable  
The McCausland Foundation  
The Philadelphia Cultural Fund  
Raynier Institute and Foundation  
Schwab Charitable Fund  
Spring Point Partners LLC  
Stearns Charitable Trust  
United Way of Greater Philadelphia  
and Southern New Jersey  
Wells Fargo Foundation  
Willis North America, Inc.  
Zimmerman Heimbach Foundation

\$5,000–\$9,999

ACE USA  
Aon Foundation  
Berkowitz Family Foundation  
The Chanticleer Foundation  
Driscoll Family Charitable Fund  
Ellason Downs Perpetual Charitable  
Trust  
The Hill at Whitemarsh  
Hoover Rehabilitation Services, Inc.  
Independence Blue Cross  
McCarter & English, LLP  
Penn Business Services  
Penn Facilities & Real Estate Services  
Sedgwick Claims Management  
Services, Inc.  
Simkiss & Block

\$2,500–\$4,999

Affleck Family Charitable Fund  
Albaum Cerino Fund  
Barnes & Noble College Booksellers,  
LLC  
Bluestone Foundation  
Dolfinger-McMahon Foundation  
The Hirshorn Company  
The Hovey Foundation  
InTech Construction  
Marsh & McLennan Companies  
Office Depot, Inc.  
The Richard and Mary Graham  
Charitable Foundation  
Studio of Metropolitan Design  
Architects, LLC  
Whetzel Family Charitable Trust

\$1,000–\$2,499

Aetna Life & Casualty Co  
Aileen K. & Brian L. Roberts  
Foundation  
American Rhododendron Society  
The Bartlett Tree Foundation, Inc.  
Bessemer Trust Company  
Chestnut Hill Hotel  
The Christian R. & Mary F. Lindback  
Foundation  
David V. N. Taylor Foundation  
The Downs Foundation  
Garden Adventures, Ltd.  
John B. Ward and Co., Inc.  
Land Concepts, LLC  
The Linda and Charles Schelke  
Charitable Fund  
Pennoni Associates, Inc.  
The Philadelphia Foundation  
Thurston Charitable Foundation  
Victor-Edsall Family Fund  
Wallace Landscape Associates

\$250–\$999

American Society of Landscape  
Architects  
Aqua Charitable Trust  
Bruce and Barbara Powers Gift Fund  
Cheltenham Township Library System  
Coventry First, LLC  
David Brothers Bean Road Nursery

Foulkeways at Gwynedd  
The Friends of the Gloucester County  
Library System  
Friends of the Upper Dublin Public  
Library  
Health Advocate, Inc.  
The Honickman Foundation  
James C. McCracken Charitable Fund  
J. H. D. Gift Fund  
Living Trust of Melvin J. & Gloria  
Chisum  
Melissa O. Koussis Interiors Inc.  
Mercedes-Benz of Fort Washington  
Metcalfe Architecture & Design

Morgan Stanley Smith Barney, LLC  
Noble Metal Inc.  
Primary Resources Group, Inc.  
Rainbow Tree Company  
Sam Browns Wholesale Nursery, Inc.  
Shechtman Tree Care, LLC  
Shelly-Dinan Funeral Homes, Inc.  
The Shusterman Foundation  
Sisters of the Holy Redeemer  
Springside Chestnut Hill Academy  
Whitemarsh Foundation  
William Jeanes Memorial Library  
Youngscape, Inc.



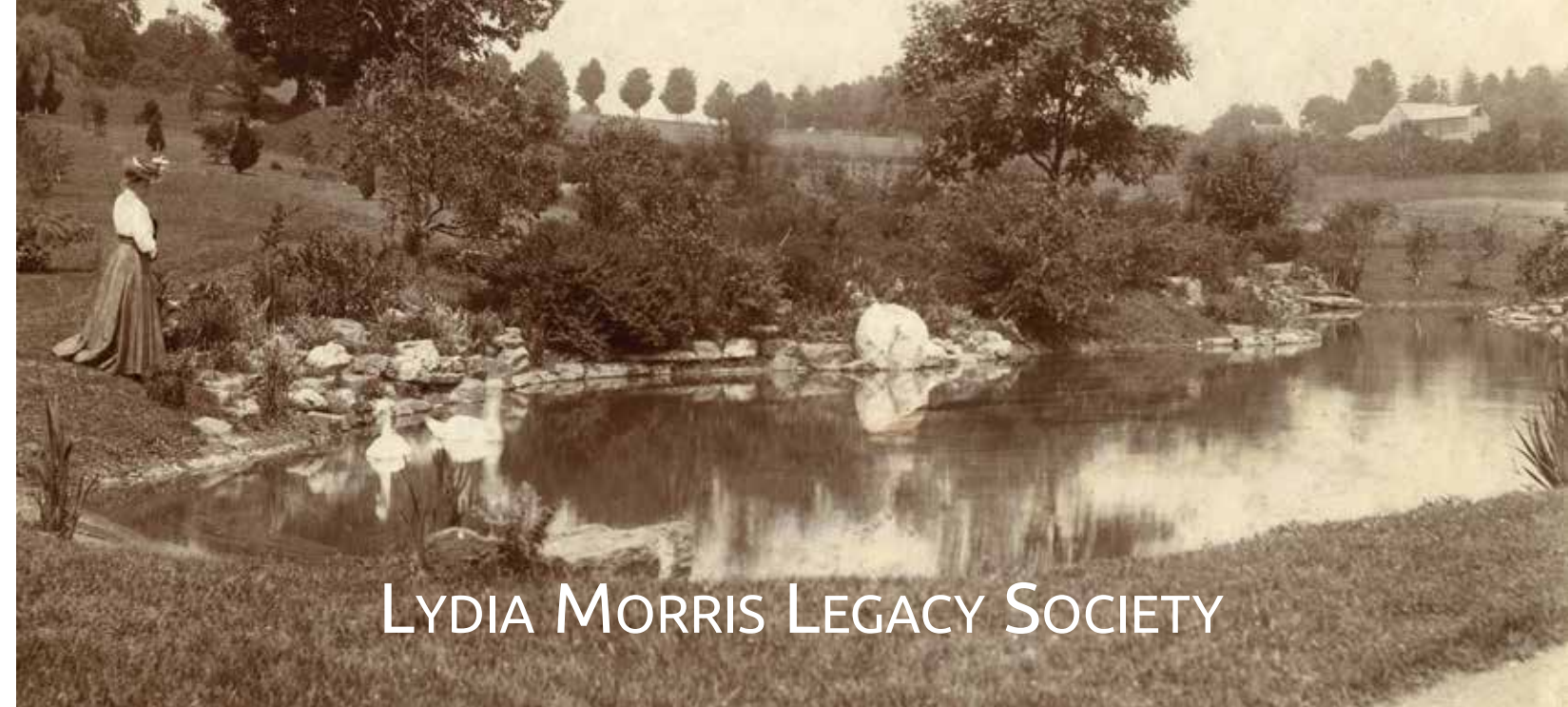




Photo: Judy Miller

## PLANNED GIVING

Planned giving has traditionally been thought of as the purview of older, more affluent donors. Today, the landscape of planned giving opportunities invites people from all walks of life to consider making gifts that will create lasting legacies to benefit the institutions they love. In FY17, the Arboretum received more than \$1,000,000 in planned gifts—including three significant bequests and a range of smaller contributions—designated to a variety of purposes, including endowment, annual giving, and special projects. Fiscal Year 2017 also marked the third consecutive year of sustained, significant growth among membership in the Lydia Morris Legacy Society, the Arboretum’s own circle of planned givers. Newer vehicles for planned giving such as the IRA rollover and donor-advised trusts have greatly helped make gift planning more accessible to a much wider audience. In fact, membership today in the Lydia Morris Legacy Society includes Arboretum volunteers, class participants, and even part and full-time staff. The Arboretum is honored to be the beneficiary of these lasting legacies and is grateful for the support of these planned giving donors.



## LYDIA MORRIS LEGACY SOCIETY

When Lydia Morris passed away in 1932, her estate plans included an endowment for the preservation, upkeep, and maintenance of an arboretum and established the Morris Arboretum of the University of Pennsylvania. In 2004, the Advisory Board of Managers created the Lydia Morris Legacy Society to honor those who have provided for the Arboretum in their estate plans and/or have made gifts through other options, such as IRA distributions. These gifts meet personal financial planning and charitable giving objectives, while helping to ensure the future of the Arboretum.

## PAUL W. MEYER - 40 YEARS OF SERVICE

As America celebrated the nation’s bicentennial in 1976, a young Paul Meyer arrived at the gates of the Morris Arboretum. This “kid from Ohio” came to the Arboretum with the goal of gaining experience before moving on. With a B.S. in Landscape Horticulture from Ohio State University, one year as an intern at Hillier’s Garden & Arboretum in England and at Hildebrant-Grein Greenhouses in Germany, and an M.S. in Plant Science & Public Garden Management from the Longwood Graduate Program at the University of Delaware, Paul was well-prepared to accept the position of Curator of the Living Collection offered by the Morris Arboretum.

Photo: Courtesy New York Botanical Garden

Paul was first introduced to the Arboretum through fellow students, and was immediately drawn to the garden because of its remarkable collection of mature trees. Little did he imagine in 1976 that his search for a “few years of experience” would turn into 15 years of service as the Curator & Director of Horticulture, followed by 25 years as *The F. Otto Haas Executive Director* of the Morris Arboretum.

In October 2016, the Arboretum community established the Paul W. Meyer & Debra L. Rodgers Historic Preservation Endowment to celebrate Paul’s legendary leadership as well as Paul and Debbie’s deep commitment to the institution and its community.



Jane B. Alavi  
Lawrence Arrigale  
Nancy & David Barclay  
John E. Basinski  
Beatrice Bast  
Roberta L. Berg  
Judy & Mac† Borie  
Harry F. Bower  
Mary Pat & Thomas Boyle  
Joan & George† Brantz  
Ellen & David Cavanaugh  
Joan Citron  
Jeanne & Philip Connolly  
Jennifer Cromer  
Betty K. Davis†  
Nancy S. Day  
Mark Delestatius  
Carol A. Dolinskas  
Karen L. Dooley  
Phoebe A. Driscoll  
Ruth & Barry Dubinsky  
Elizabeth O. Evans  
Joseph P. Flanagan Jr.  
Barbara Fricker  
Marjorie J. Funderburg  
Eleanore & Christopher Gadsden

Deborah E. Glass  
Anne & W. Laurence Godley  
Mary & Richard Graham  
Richard S. Greeley  
Joan O. Hanby  
Kathy & William Harral III  
Ellen Nalle Hass  
Pamela & James Hill  
Charles J. Ingersoll  
Christine James  
Barry W. Jeffries  
Jane Subak Kennedy  
Toni & Herbert Kestenbaum  
Sarah Ketchum  
Janet E. Klein  
Jane & Leonard Korman  
Joan Kronick  
Lee Laden  
Susan & William Learnard  
Marilyn & Stephen Leonard  
Elizabeth & Robert Lukens  
Janet & William Lutz  
William Maloney  
Evamarie Malsch  
Elizabeth P. McLean  
Alan T. Miller

Gail D. Miller  
Hiram H. Munger  
Joyce Neff  
J. Kenneth Nimblett  
Ronald Pieringer  
Nancy D. Pontone  
Ruth G. Preucel  
Francis H. Rasmus  
Ann & Frank Reed  
Ann F. Rhoads  
Christine & Stefan Riesenfeld  
Linda & Walter L. Ritter III  
Debra L. Rodgers & Paul W. Meyer  
Joan S. Root  
Cornelia Schaefer  
Rebecca Shapiro  
Pam & Michael Sharp  
Elizabeth & John A. H. Shober  
Victoria Crago Sicks  
Marcia & Leon Steinberg  
David Stokes  
Susan Wexler†  
Elizabeth Van Vleck  
Quentin M. White

† Deceased





Photos: Mark Stehle

# Moonlight & Roses

The Arboretum's annual fundraising gala, *Moonlight & Roses*, is a much-anticipated, premier summer event in Philadelphia. The Morris Arboretum is grateful to the following donors who supported *Moonlight & Roses* held on June 2, 2017.

MAGNOLIA SPONSOR

The Haverford Trust Company

TULIP SPONSOR

Willis Towers Watson

AZALEA SPONSORS

Chubb  
McCarter & English, LLP

LILY SPONSORS

Aon  
Conduent  
The Hill at Whitemarsh  
Independence Blue Cross  
Sedgwick Claims Management  
Services, Inc.  
Simkiss & Block  
University of Pennsylvania, Business  
Services  
University of Pennsylvania, Facilities  
and Real Estate  
Zurich North America

CAMELLIA SPONSORS

AIG  
Barnes & Noble  
Hirshorn Boothby

INTECH Construction  
Marsh  
Office Depot  
Studio of Metropolitan Design  
Architects  
Team Whetzel

LEADERSHIP CONTRIBUTORS

Jessie R. Deming & Robert A. Boyer  
Edith Robb Dixon  
Susan & Moses Feldman  
Elizabeth & Kyle Salata

BENEFACTORS

Aileen K. & Brian L. Roberts  
Foundation  
Christine & Michael Bamberger  
Marcia & Ross Campbell  
Jenny Rose & Gus Carey  
Amanda & Andrew Cobb  
Amy & Sean Coleman  
Christina & Dean Fournaris  
Alisa & Gray Gifford  
Nanny Gifford  
Mary & Richard Graham  
Carole Haas Gravagno  
Janet & John Haas  
Thomas W. Haas

Ellen & Jay Hass  
Margaret & Richard Hayne  
Pamela & James Hill  
Jessie B. Hill  
Lynda & W. Anthony Hitschler  
David Hoffman  
Thomas Hyndman  
Jane & Leonard Korman  
Lee Laden  
Sarah & Ted Lodge  
Elizabeth & Robert Lukens  
Jane MacElree  
Ann & Charles Marshall  
Bonnie & Peter McCausland  
Deborah R. Popky  
George L. Popky  
Ann L. & Frank Reed  
Mary D. Starr  
Maria & Radclyffe Thompson  
Susan West & Bob Price  
Ethel Wetherill

PATRONS

Amy Branch & D. Jeffry Benoliel  
Annabelle & Doug Canning  
Emily & Michael Cavanagh  
Cheryl Clearwater & William Brennen  
Kelly & Joseph Culley



Adriana della Porta  
Gene & Charles Dilks  
Jane & Walter Evans  
Charlotte Feldman  
Susan & Robert Fleming  
Wendy & Walter Foulke  
Irma & Christopher Fralic  
Kristine Frisbie  
Eleanore & Christopher Gadsden  
C. Meade Geisel  
Sally & Steven Gendler  
Ellen & Howard Goodwin  
Robert Gottlieb  
Sandra & Thomas Greenwood  
Elizabeth & Henry Harris  
Penelope Harris  
Cynthia & Martin Heckscher  
Ann & Steven Hutton  
Louise Johnston  
Jill & George Kyle  
Susan & William Learnard  
Augusta Leininger  
Elizabeth & John Lindsay  
Susan & Thomas Lloyd  
Florence & Richard Maloumian  
Laurie & Sam Marshall  
Elizabeth P. McLean  
Hope & James Morrissey  
Diane Newbury & Steven P. Berman  
Maris Ogg & Robert Smith  
Mary Beth E. Ounsworth  
Susan & Robert Peck  
Pennoni Associates, Inc.  
Lizann Rode  
Gerald Rorer  
Bonnie & Peter Schorsch  
Lori & Stephen Scott  
Elizabeth & John A. H. Shober  
Mary & David Singer  
Joly W. Stewart  
JoAnn & Joseph Townsend

Quentin M. White  
Catherine A. Worrall  
Sue & Michael Young

SUPPORTERS

Cynthia & John Affleck  
Martha & Williams Agate  
Jan Albaum & Harry Cerino  
Gabrielle Baugh  
Bruce Belzak  
Roberta L. Berg  
Linda Boggs  
Dencie M. Brooke  
Rebecca W. Bushnell & John D.  
Toner  
Barbara T. Butler  
Sandy Cadwalader  
Carol & Robert Gray  
Elie-Anne & Rudy Lewis  
Amy Coes  
Andrea & Milton Coll  
Emily & Edward Daeschler  
Denise DeLaurentis Cilio & Peter C.  
Cilio  
Diane Pastella  
Nina Diefenbach  
Ashley Douglas  
Sonya D. Driscoll  
Phoebe A. Driscoll  
Garden Adventures, Ltd.  
Sabina Gatti  
Richard S. Greeley  
Janet & John Haas  
Ellie & Gilman Hanson  
Meg Holscher  
Eileen & Ronald Javers  
Sally & Craig Johnson  
Stephanie Kindt  
Janet & William Lutz  
Hanna MacFarland  
Elizabeth Masters & John Basinski







Thomas McCarthy  
William F. McLaughlin Jr.  
Alan R. Metcalfe  
Alison & Alexander Nalle  
Janet E. Novak  
Judith & Thomas O'Rourke  
Christine Ottow  
Rosaleen & Richard Parsons  
Pennsylvania Horticultural Society  
Matthew Perks  
Matthew Rader & Michael Smith  
Amanda & James Rice  
Chris Rorer  
Lori Salganicoff  
Sarah Sanz  
Hugh A. Sargent  
Cornelia Schaefer  
Kimberly G. Sheppard  
Nina Silverman & Bart Kaplow  
Joe Soprani  
Sidney & C. Stewart W. Spahr  
Springside Chestnut Hill Academy  
Peter C. Trentacoste  
Wallace Landscape Associates  
Thomasina White  
Charles S. Wurts  
Benjamin Wurts  
Mims & Marek Zabriskie  
Lenore & Albert Zimmermann

#### YOUNG FRIENDS

Megan & Peter Boss  
Ala Brown & Joseph Yi  
Stacey & Justin Capetola  
Anne & David Choate  
Margaret & Dwayne Cox  
Katy & Jason Friedland  
Caroline Linz  
Victoria Myers  
Susan & Scott Perricelli  
Betsy & Jake Ramage

Melanie Redican  
Elizabeth & Peter Richardson  
Sarah & Morgan Salmon  
Dana Shanis  
Alexa & Gerardo Talamo  
Matthew J. Wetzel  
Christine & Reed Wilmerding

#### CONTRIBUTORS

Jane & Abass Alavi  
Brooke Alderfer  
Sheila & Antonio Ano  
Aqua Charitable Trust  
Leonard Aulenbach & Paul McKelvie  
Margaret & Nathaniel Bowditch  
Lyn Buchheit  
Mrs. Frederic S. Claghorn  
Christine & Charles Clayton  
Pauline Gray & Edward S. Barnard  
Charles W. Head & John A. Faggotti  
Health Advocate, Inc.  
Anne & David Hilton  
Kathlene & William Hohns  
Mercedes-Benz of Fort Washington  
Morgan Stanley Smith Barney, LLC  
Jane G. Pepper  
Emily Pollard  
Loren J. Vosika  
Cynthia H. Walker  
Minturn T. Wright III  
W.P. PALMER DISTILLING Co.

Photos: Mark Stehle

Photo: Ashley E. Hackett



## IN-KIND DONATIONS

Ben Alkire  
The Ambler Theater  
The Arnold Arboretum of Harvard University  
Donald D. Atkiss  
Barnes Horticultural Services  
The Botanic Garden of Smith College  
The Brenton Arboretum  
Brooklyn Botanic Garden  
Brotzman's Nursery  
Chanticleer  
Chestnut Hill Business Association  
Chestnut Hill Sports  
Company's Coming Catering  
Lynn J. Cook & Troy Ray  
Cornell University  
Charles O. Cresson  
The Dawes Arboretum  
Diamond Spa  
Emily & Edward Daeschler  
Flourtown Movie Tavern  
Haverford College Arboretum

Hay Honey Farm  
Holly Society of America, Inc.  
Josh Hunter  
Iseli Nursery  
J. G. Akerboom Nurseries, Inc.  
Jack Johnston  
Kendal at Longwood  
William J. Kozemchak  
Michael Lindee  
Longwood Gardens, Inc.  
Magerk's Pub & Grill  
Marano Gardens LLC  
McCarter & English, LLP  
McNally's Tavern  
Mister P Pizza & Pasta  
Moore Farms Botanical Garden  
The Morton Arboretum  
Natural Landscapes Nursery  
The New York Botanical Garden  
Nichols Nursery  
Norfolk Botanical Garden  
North Central Regional Plant

Introduction Station  
Robertson's Flowers & Events  
Rutgers Gardens  
Gayle Samuels  
Andy Schenck  
Nina & Eric Schneider  
Scoogi's  
Scott Contractors, Inc.  
The Scott Arboretum  
Edward T. Shinn  
Tague Lumber  
Tavern on the Hill  
Temple University Ambler  
U.S. National Arboretum  
Miriam & Jon Von Essen  
W.P. PALMER DISTILLING Co.  
Winterthur Museum, Garden & Library  
Jeffrey M. Welsh  
Woody Landscape Plant Germplasm Repository

## MATCHING GIFT ORGANIZATIONS

ACE Charitable Foundation  
Aetna Life & Casualty Co.  
American Endowment Foundation  
The Aramark Charitable Fund  
at the Vanguard Charitable  
Endowment Program  
The Asplundh Foundation  
Black Rock Financial Management

The Boeing Company Gift  
Matching Program  
Chipstone Foundation  
General Electric Company  
GlaxoSmithKline Foundation  
Goldman Sachs Group, Inc.  
IBM Matching Grants Program  
Johnson & Johnson Corporation

Merck & Company, Inc.  
Mondrian Investment Partners  
Penn Virginia Corporation  
The Pew Charitable Trusts  
PNC Bank Foundation  
Prudential Foundation Matching  
Gifts Program  
Vanguard Group Foundation  
William Penn Foundation

Photo: Paul W. Meyer







Photos: Paul W. Meyer

## ADVISORY BOARD OF MANAGERS FISCAL YEAR 2017

Ellen Nalle Hass, *Chair*  
Christopher H. Gadsden, *Vice Chair*  
Pamela M. Hill, *Vice Chair*

Jane Bradley Alavi, *Emeritus*  
Elie-Antonie Atallah  
Robert A. Boyer\*  
Rebecca W. Bushnell  
Peter C. Cilio\*  
George W. Connell, *Emeritus*  
Edith Robb Dixon  
Moses Feldman, *Emeritus*  
Christina Mesires Fournaris  
Carole Haas Gravagno  
Janet F. Haas  
Dorrance H. Hamilton†  
William A. Hohns  
Charles J. Ingersoll  
Christine James  
Jane F. Korman, *Emeritus*  
Sarah Lodge  
William F. McLaughlin, Jr.\*  
Elizabeth P. McLean, *Emeritus*

Sandra L. McLean  
James Morrissey  
Susan W. Peck  
Ann Reed, *Emeritus*  
Carl G. C. Robbins  
Elizabeth Salata  
Nina Schneider  
Bonnie Schorsch\*  
John A. H. Shober, *Emeritus*  
Martha J. Wallace  
Clarence Z. Wurts  
Sue Young\*  
Ruth Chang, *Ex-Officio\*\**  
Tai Chang, *Ex-Officio\*\**  
Amy Gutmann, *Ex-Officio*  
Craig Carnaroli, *Ex-Officio*  
Anne Papageorge, *Ex-Officio*  
Marie Witt, *Ex-Officio*  
Paul W. Meyer, *Ex-Officio*  
Kevin Schrecengost, *Ex-Officio*

\* *Elected for FY18*

\*\* *Appointed for FY18*

† *Deceased*

## DIRECTORS GUILD

Robert A. Boyer, *Chair*  
Cynthia Affleck  
Wilfreta Baugh  
Joan & Livingston Biddle  
Jessie R. Deming  
Joan & George† Brantz  
Ruth & Tai Chang  
Mary B. Coe  
Karren & G. Edward Deseve  
Susan Fleming  
Pamela Gagné  
Lisa M. Gemmill  
Mary & Richard Graham  
Pauline Gray & Edward Barnard  
Joan O. Hanby

Ann D. Hozack  
Eileen & Ronald Javers  
Lee Laden  
Eleanor P. Lloyd  
Elizabeth & Robert Lukens  
Jane MacElree  
Evamarie Malsch  
Hiram H. Munger  
Maris Ogg  
Robbyn O'Neill  
Rebecca M. Shuttleworth  
Maria & Radclyffe Thompson  
Elizabeth Van Vleck  
Lenore & Albert Zimmermann Jr.

† *Deceased*







STAFF

Director's Office

Paul W. Meyer *The F. Otto Haas Executive Director*  
Patrice Sutton Assistant to the Director

Botany

Dr. Timothy A. Block *The John J. Willaman Director of Botany*  
Anne Barber Research Project Coordinator  
Trista Crook *The Eli Kirk Price Flora of Pennsylvania Intern*  
Anna Giesmann *The John J. Willaman and Martha Haas Valentine Plant Protection Intern*  
Sandy Hostetter\* Librarian  
Carol Lourea-Black\* Administrative Assistant  
Cindy Skema Research Botanist

Flora of PA Project Assistants  
Michelle Mancini\*  
Melissa Mayol\*  
Emily Unrue\*

Development

Mira Zergani Director of Development  
Kristen Casalenuovo\* Development and Special Events Coordinator  
Alex Coll\*\* Assistant Director of the Annual Fund  
Leslie Crane\* Development Communications Associate  
Nichole Hayward\*\* Manager, Membership and Development Data Systems  
Jessica Lynch\*\* Associate Director, Individual Giving  
Chelsea Melvin Development Coordinator  
Scott Rinehart\*\* Development Data and Membership Assistant  
Sylvia Studenmund\*\* Membership Assistant  
Alison Thornton Senior Associate Director, Annual Giving Programs  
Leslie Weissner Associate Director, Corporate, Foundation and Donor Relations

Education and Visitor Experience

Robert Gutowski Director of Education and Visitor Experience  
Lisa Bailey Administrative Assistant Education  
Cynthia Bowman\* Visitor Experience Supervisor  
Joyce Burian\* Receptionist/Education Assistant  
Michelle Conners\* Events Coordinator  
Alex Correia-Sareyka *The McLean Contributionship Education Intern*  
Christopher Dorman Assistant Director, Visitor Experience, Rentals & Retail  
Liza Hawley Assistant Director, Visitor Education & Youth Programs  
Diane Humphries\* Receptionist/Education Assistant  
Trish Kemper\* Urban Forestry Assistant  
John Kolanko\* Visitor Experience Supervisor  
Stacey Kutish\*\* Digital Interpretation Strategist  
Jason Lubar Associate Director, Urban Forestry  
Jan McFarlan Assistant Director, Education and Intern Program  
Leslie Morris-Smith\* Archivist  
Chris Poulin\* Visitor Experience Supervisor  
Jane Shields\* Project Coordinator  
Marissa Sobel\* Youth Education Assistant

Tiffany Stahl\* Education Program Specialist  
Bryan Thompson-Nowak Assistant Director, Education & Penn Outreach  
Robert Wells Associate Director Arboriculture Outreach  
Ann Marie Winicki\* Visitor Experience Supervisor

Visitor Experience  
Sarah Allison-Kern\* Stacy Everson\*  
Larry Arrigale\* John Faggotti\*  
Lydia Barrett\* Kasia Fogarasi\*  
Linda Berger\* Carryn Golden\*  
Debbie Blackstock\* Nina Giacobbe\*  
Patricia Ciliberto\* Charles Head\*  
Jessica DiBattista\* Sandy Houston\*  
Richard Distefano Linday Jones\*  
John Ekberg\* † Donna Lorenz\* †

Visitor Experience (cont'd)  
Josephine Marrocco\*  
Wilhelmina McDaniel\*  
Kathleen McDonnell\*  
Benjamin Mellon\*  
Marcus Norville\*  
Kelsey Ransick\*

Joan Regan\*  
Patricia Sherphorn\*  
Elaine Siderio\*  
Michelle Smith\*  
Nicholas Turco\*  
Loren Vosika\*

Finance

Kevin Schrecengost Director of Finance and Administration  
Karen Owens Financial Manager  
Gayle Portzline\* Administrative Assistant

Horticulture

Anthony S. Aiello The Gayle E. Maloney Director of Horticulture & Curator  
Tracy Beerley\*\* The McCausland Natural Areas Horticulturist  
Tom Bishop\* Gardener  
Kevin Brown *The Walter W. Root Arboriculture Intern*  
Shane Campbell Gardener  
Louise Clarke Bloomfield Farm Horticulturist  
Tess Adgie *The Charles S. Holman Rose and Flower Garden Intern*  
Kate Deregibus English Park Horticulturist  
Shelley Dillard Propagator  
Lucy Dinsmore Azalea Meadow Horticulturist  
Elinor Goff\* Plant Recorder  
Andrew Hawkes Assistant Arborist  
Erin Holiman *The Alice and J. Liddon Pennock, Jr. Horticulture Intern*  
Vince Marrocco Chief Horticulturist/Rosarian  
Joseph Murtaugh Gardener/Facilities Assistant  
Pamela Morris-Olshefski\* Curatorial Assistant  
Paul Orpello Compton Horticulturist  
Jehane Samaha *The Martha J. Wallace Plant Propagation Intern*  
Jess Slade The McCausland Natural Areas Horticulturist  
Keith Snyder Equipment Supervisor  
Elizabeth Trout *The Hay Honey Farm Natural Areas Intern*

Seasonal Garden Assistants  
Alfonso Castro Aguilar\* Mary Ann Morell\*  
Micheil Finley\* Bruce Morrell\*  
Diane Hannigan\* Carly Mulholland\*  
Amanda Logan\* J. Scott Phillips\*  
Jodi Mallory\* Steve Pyne\*  
Ned McConaghy\* Elijah Reese\*  
Brendan McNabb\* Sonny Sunga\*  
Evan McNaught\* Joshua Valentine\*  
Chelsea Miller\*

Marketing

Susan Crane Director of Marketing  
Ashley Angell\* Social Media Strategist  
Amanda DeLeo\* Web Manager  
Marie M. Ingegneri\* Marketing Events Coordinator  
Christine Pape Publications Editor/Graphic Designer

Physical Facilities

Tom Wilson Director of Physical Facilities  
Darryl Lourea-Black Building Supervisor  
Ken McDermott\* Facilities Services  
Joe Mellon Maintenance Mechanic

Facilities Services Assistants  
Thomas Bregatta\* Richard McAdams\*  
Michael Burnett\* Janice Pavlovich\*  
Norberto Concepcion\* Robert Posner\*  
Leonie Goldman\* Nicholas Shields\*  
Frank Hollingsworth\* Andrew Staples\*  
Daniel Killoran\* Daniel Wido\*

\* Part-time Staff  
\*\*No Longer on Staff  
† Deceased

Photo: Marianne Miserandion

