

# SEASONS

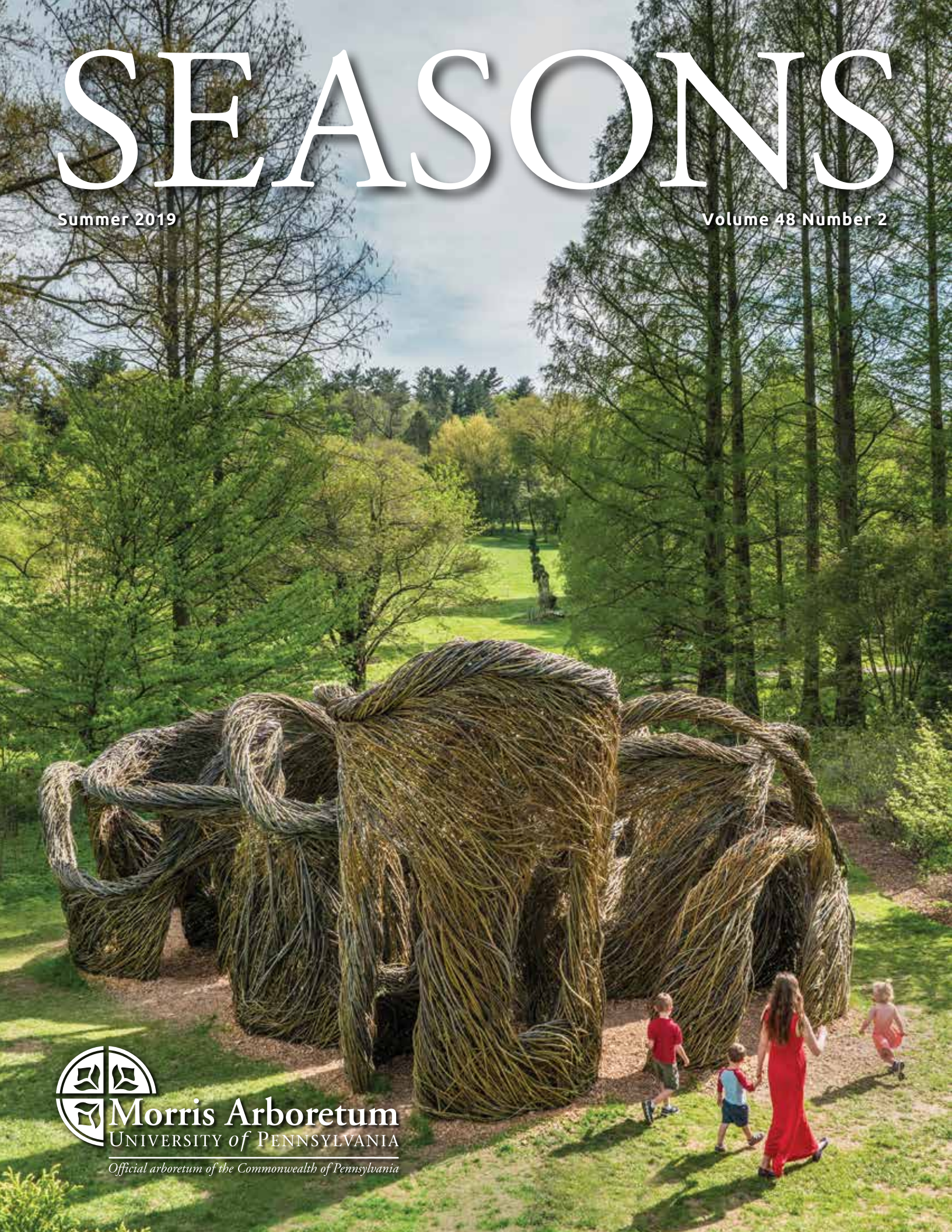
Summer 2019

Volume 48 Number 2



**Morris Arboretum**  
UNIVERSITY of PENNSYLVANIA

*Official arboretum of the Commonwealth of Pennsylvania*





# SEASONS

Morris Arboretum of the  
University of Pennsylvania

Published three times a year as a benefit of membership.  
Inquiries concerning back issues, missing issues, or  
subscriptions should be addressed to the editor.

USPS: 349-830. ISSN: 0893-0546  
POSTMASTER: Send form 3759 to Newsletter,  
100 East Northwestern Avenue, Philadelphia, PA  
19118.

Christine Pape, Graphic Designer/Editor

**Public Garden Hours:**  
Mon-Fri, 10am-4pm  
Sat/Sun, 10am-5pm (April - Oct.)  
Sat/Sun, 8am-5pm (May - Sept.)  
Sat/Sun, 10am-4pm (Nov. - March)  
Wed, 10am-8pm (June, July, August)

**Information:**  
(215) 247-5777  
info@morrisarboretum.org  
www.morrisarboretum.org  
http://www.upenn.edu/paflora

**Guided Tours:**  
Every Sat/Sun, 2pm

**Visitor Entrance:**  
100 East Northwestern Avenue between  
Germantown and Stenton Avenues in the  
Chestnut Hill section of Philadelphia

These articles may not be reproduced in any form  
without the permission of the editor.

©2019 Copyright by the Trustees of the University of  
Pennsylvania. 8000 / 5.1.2019 / PM

## Arboretum Rentals

Hold your special event in one of Philadelphia's  
most beautiful settings. The Widener Center and  
surrounding grounds are available for weddings,  
parties, and private and corporate meetings up to  
170 guests. For details contact the Rentals Team at  
(215) 247-5777, ext. 158.

## e-newsletter

Would you like to receive our monthly e-newsletter  
and other Arboretum updates via email? It's a  
great way for you to stay up-to-date on upcoming  
events, register online and help us save trees! Email  
members@morrisarboretum.org to be added. To  
address the problems of SPAM, many Internet Service  
Providers (ISPs) and email systems now block or  
filter email that is not from a "safe sender." Please  
add info@morrisarboretum.org and members@  
morrisarboretum.org to your list of accepted senders  
or friends list if you wish to receive this information.

Cover Photo: Nick Kelsh

Support provided by:



## Contents

- 2 A Fitting Farewell
- 3 *Ever Green* Campaign Update
- 6 Patrick Dougherty's *Loop de Loop*
- 7 *Out on a Limb* Celebrates 10 Years
- 8 Plant Collecting in Japan
- 10 Botany for Beginners - Part III (The Basics of Flowers)
- 11 Catching Up on Tree Care
- 12 Growing the Garden Railway
- 13 The World According to Vince Marrocco
- 14 Staff Development
- 15 *After B.K.S. Iyengar*
- 16 Summer Classes
- 17 Growing Minds – Fun, Engaging Classes for Kids!
- 18 *Moonlight & Roses*
- 18 Where Will Your Card Take You this Summer?
- 19 Tributes and Memorial Gifts
- 20 Summer Events

Photo: Geoff Bassett



Photo: Guillermo Torres

## A Note from the Interim Executive Director

**BOB GUTOWSKI**, *Interim Executive Director and Director of Education and Visitor Experience*

It is April as I write this note. We have just announced the appointment of William (Bill) Cullina as the *F. Otto Haas Executive Director* of the Morris Arboretum, effective July 8, 2019. Bill comes to the Morris Arboretum from Coastal Maine Botanical Gardens where he has served as its President and CEO since 2011 and led the development and funding of a comprehensive 20-year master plan. He is well known as an author and lecturer, and highly respected for his accomplishments and character.

Bill will be welcomed by an amazing community of engaged and dedicated Arboretum members, colleagues, volunteers, and staff. The Morris Arboretum today is relevant, financially sound, program-strong, highly regarded, and much loved. Bill is familiar with the institution and is eager to meet our community, learn more about the many current strengths and opportunities for productive change with our audience, our collections, and our research and education programs. Bill tells us, "I am thrilled and honored to be joining the Morris Arboretum as its executive director. It is truly a once in a lifetime opportunity, and I am deeply grateful to the board and University for selecting me as the next leader of this great institution. I cannot wait to get started!"



Photo: Nick Kelsh

As Bill embarks on his new leadership role, he embraces an institution with major historic preservation projects underway and a capital campaign making great strides. The Rose Garden is undergoing a major renovation. Seven Arches is undergoing restoration of its historic structure along with stormwater management improvements. *Out on a Limb* will celebrate its 10<sup>th</sup> anniversary with an endowment that assures it will continue to engage and delight many generations, young and old, with the tree canopy experience.

Clearly, we have grown significantly in implementing a plan for the Morris Arboretum that was first envisioned by John and Lydia Morris. Begun by the Botany Department of the University of Pennsylvania, this plan was renewed with the leadership of F. Otto Haas and the directorships of Dr. William M. Klein, Jr. and Paul W. Meyer. We are eagerly anticipating the Arboretum's next chapter under Bill Cullina's direction.

He becomes a steward of an important historic public garden and vital educational institution with a compelling purpose. We can expect that he will be, as John Morris hoped, "a worthy steward" to plan, cultivate, and grow the Arboretum to serve and inform an even greater community. Please join us in welcoming Bill to the Morris Arboretum and the Philadelphia community.

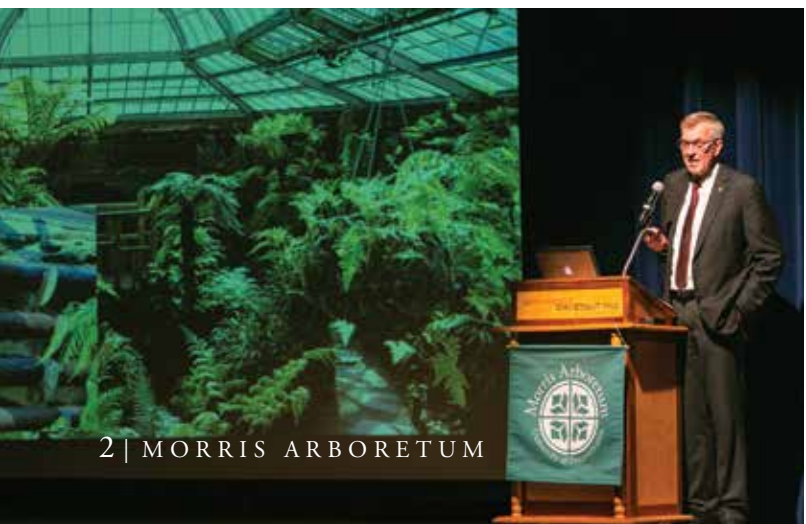
*Bob Gutowski*



# A Fitting Farewell

On Sunday, March 31, 2019, more than 300 Arboretum friends, members, and staff gathered to pay tribute to Paul W. Meyer's 43-year legacy. The event included remarks by Ellen Nalle Hass, Chair of Morris Arboretum's Advisory Board of Managers; Carole Haas Gravagno, Board Member; and Marie Witt, Vice President, Business Services, University of Pennsylvania. Robert Gutowski, Director of Education and Visitor Experience at the Arboretum presented Paul with a resolution dedicating the Arboretum's main entrance drive as "Paul W. Meyer Drive." Longtime Arboretum friend Radclyffe "Mike" Thompson and Billy Handy, both members of The Orpheus Club of Philadelphia, performed a moving rendition of Louis Armstrong's "What a Wonderful World." The Morris Arboretum is especially thankful to Springside Chestnut Hill Academy for offering their beautiful campus for this momentous occasion.

Photos: Mark Stehle



# everGREEN Campaign Update Rising to the Challenge

In September 2018, Executive Director Paul W. Meyer informed the Arboretum community that he would be retiring in spring 2019. Shortly thereafter, a longtime Arboretum board member issued a \$1 million challenge pledge to the *Ever Green* campaign in honor of Paul's service. The challenge was clear: Arboretum supporters were asked to contribute matching funds for efforts articulated in the campaign's "Cultivating the Garden" priority area. "Cultivating the Garden" comprises those efforts that serve to enhance the Arboretum's magnificent gardens and historic features. It includes endowment funds for historic preservation and facility maintenance, as well as refurbishment funds for iconic features such as the Rose Garden and the Fernery. Within six months, generous supporters, with gifts both large and small, had matched the challenge grant two to one, generating more than \$2 million, in addition to the initial \$1 million challenge pledge. These contributions to the campaign will help the Arboretum continue to "cultivate the garden," a most fitting tribute to Paul, who is forever credited with the near total physical transformation of the Arboretum during his 43-year tenure.



Photo: Paul W. Meyer

## Watch Us Grow

Campaign Goal  
**\$36 MILLION**

**\$26+ MILLION**  
Raised as of April 15, 2019

Cultivate the Garden

Lead Research Initiatives

Improve Public Access  
and Inclusion

everGREEN  
Strengthen Our Roots, Ensure Our Growth





# everGREEN Campaign Update

## Fundraising Success for the Rose Garden and Fernery

For several years—even prior to the launch of the *Ever Green* campaign—the Arboretum has been conducting a quiet fundraising effort to support the completion of the perimeter project in the Rose Garden as well as for the replacement of the heating system in the Dorrance H. Hamilton Fernery.

The framework of the *Ever Green* campaign has helped to convey the urgency of these two critical projects and the response from donors has been swift. As of February 2019, nearly all of the funds needed for the Rose Garden and the Fernery projects have been raised.

In the current fiscal year alone, more than \$300,000 was raised for the Rose Garden perimeter project while more than \$200,000 was raised for the Fernery heating project. These funds, in addition to the many gifts received in earlier years, have made it possible for the Arboretum to officially “kick off” work on these two important initiatives.

The Arboretum is grateful to its friends and donors who have made gifts both large and small to ensure that these iconic experiences remain among the vanguard of visitor destinations at the Arboretum.

## Rose Garden Improvements

In 2016, the first phase of the Rose Garden perimeter project was completed, which included installing the upper and side (accessible) gates and replacing most of the deer fence that runs through the boxwood and conifer screens. The current, much larger phase includes fencing the remaining boundary of the Rose Garden, from the accessible entrance to the Summer Cottage, along the whole lower edge to the Fernery entrance.

From the side entrance to the Summer Cottage, standard deer fencing matching the existing style will be added. At the Summer Cottage, an improved set of steps and an enlarged bluestone paved area will make this a more welcoming and useful gathering area. Along the lower edge of the garden, an attractive deer fence will be constructed, integrated into a low seat wall. At the center steps, a pair of tri-fold gates will be added to maintain the 30-foot opening and long view along the main axis of the garden. Finally, at the west corner, another matching gate will be added.



Photo: Paul W. Meyer

These improvements will allow a variety of roses and other deer-susceptible plants to continue to be planted, while improving the aesthetics and functionality of the perimeter.



Photos: Alex Correia-Sareyka, Bob Gutowski, Paul W. Meyer

## Promoting Access and Inclusion and Creating a New Generation of Garden Advocates

The impact of even one visit to the Arboretum can be profound, especially for children who have never had access to safe, green spaces. Recent research confirms that green settings promote happiness, well-being, better health, and greater success in school. For these reasons and more, increasing public access and inclusion are among the most important aims of the *Ever Green* campaign. Toward this end, recent gifts to the Arboretum have helped to establish the Education Endowment Fund for Underserved Children. This endowment will provide a stable and ongoing source of financial support enabling the Arboretum to admit greater numbers of Title 1 and similarly underserved school groups to the Arboretum free of charge. In addition, this fund will also help to support transportation costs—one of the most significant barriers to fuller Arboretum access—for schools who simply cannot afford the cost of buses.

The Arboretum continues to solicit gifts for this special endowment which will ultimately help to double visitation rates from underserved schools. If you would like more information on how you can help to support school visitation programs, please contact Mira Zergani, Director of Development at [mzergani@upenn.edu](mailto:mzergani@upenn.edu) or (215) 247-5777 ext. 102.



SEASONS SUMMER 2019 | 5



# Patrick Dougherty’s *Loop de Loop*

For three weeks in March, artist Patrick Dougherty worked with Arboretum staff and volunteers to create a whimsical, site-specific sculpture in the Madeleine Butcher Sculpture Garden. The piece, named *Loop de Loop*, is already a visitor favorite and is reminiscent of a roller coaster with its numerous spirals and switchbacks. The maze-like structure contains light-filled tunnels that connect nearly a dozen “rooms.” The sculpture was created using hundreds of willow sticks including purple willow (*Salix purpurea*) and Miyabe willow (*Salix miyabeana*) transported from upstate New York.

For the past three decades, Patrick Dougherty has combined his love of nature with his skills as a carpenter, creating nearly 300 unique sculptures. Utilizing primitive techniques of building, Patrick uses sticks as construction materials, recognizing them as a renewable resource which everyone can relate to. The piece will remain in place for as long as it lasts in the natural environment, anticipated to be two years. The exhibit is supported by the Madeleine K. Butcher Fine Arts Endowment.

Photos: Susan Crane, Amanda DeLeo, Paul W. Meyer



# *Out on a Limb* Celebrates 10 Years

Since it opened to the public in 2009, *Out on a Limb* – a Tree Adventure exhibit has quite literally transformed the Morris Arboretum. From its very inception, its purpose was to offer families and visitors of all ages the opportunity to interact with nature in new ways.

*Out on a Limb* has achieved everything that was envisioned—and more. It has been one of the leading factors in the Arboretum’s rise in membership and visitation since its opening and it has won multiple awards for design and ingenuity.

*Out on a Limb* was designed as part of the Tree Adventure exhibit, which included additional interpretative elements and activities. Over the past ten years, many of these activities were so successful that it became time to retire them in favor of new elements. This summer, a new listening station will be added to *Out on a Limb* to enable visitors to “hear” the sounds of nature from the tree canopy. New interpretative panels in the garden will be installed, and an associated “Guide to Tree Adventure” will help families explore the garden in a fun and interactive way. There will also be a new temperature station at the springhouse showing how trees “cool” the environment with larger, easier to see temperature readouts. These updates, along with others, will ensure that the next ten years will be just as successful in sharing how amazing and important trees are to us and our world.

The Arboretum is indebted to Jane and Leonard Korman for their leadership and vision in making this exhibit a reality. They committed themselves fully to the project as lead donors for its construction, and created an endowment to support the ongoing preservation of the structure. An additional gift from the Korman Family Foundation in 2015 ensured that *Out on a Limb* will continue to be enjoyed by future generations of Arboretum visitors.

Photos: Paul W. Meyer, Bekka Schultz, Mark Stehle







# Plant Collecting in Japan

ANTHONY AIELLO, *The Gayle E. Maloney Director of Horticulture and Curator*

One of the results of multiple years of plant exploration is the opportunity to find connections in unexpected places. I have been fortunate to work with Michael Dosmann, a colleague at our sister Ivy League institution, the Arnold Arboretum of Harvard University. We have traveled together on expeditions throughout the United States and Asia. In the fall of 2018, our collaboration continued with an expedition to the island of Honshu, Japan, joined by Steve Schneider (Arnold Arboretum), Todd Rounsaville (Polly Hill Arboretum), and Mineaki Aizawa and Tatsuhiko Shibano (Utsunomia University).

Not only did this two-week expedition allow us to visit six locations where we made 58 collections of 55 different taxa, but more importantly, we gained a deeper understanding of the lessons of biogeography by observing closely-related and similar-looking disjunct species, far from their nearest relatives.

An extraordinary aspect of this expedition was observing and collecting species that are closely related to ones that we had seen across China and throughout the U.S. It was fascinating to get first-hand experience with a trio of species, having previously seen the Japanese counterparts only in cultivation.

The expedition initially focused on Nikko National Park, located about three hours north of Tokyo, and on our third day in the field, we came across forked viburnum (*Viburnum furcatum*) growing along the edge of Lake Yuno. With it were massive trees of Japanese arborvitae (*Thuja standishii*) and hiba false arborvitae (*Thujopsis dolabrata*), along with thickets of bright-barked Japanese clethra (*Clethra barbinervis*). Most of the viburnum's wide, rounded leaves had heavy insect feeding damage, giving it the Japanese common name of mashikari ("always eaten by insects"). Despite this, the growth habit and leaf shape instantly reminded us of two other viburnums seen thousands of miles away: the eastern North American hobblebush (*V. lantanoides*), and the Chinese counterpart viburnum, *V. sympodiale*. I had first seen the American species in the Smoky Mountains in 2002 and the Chinese one on a 2005 expedition to Gansu Province.

Throughout this expedition, we made a number of other collections of Japanese species that have familiar North American relatives. There are many examples of the North America-Asia pairings, but fewer examples of the North America-Europe-Asia sets of species. An example of the latter occurrence is beech (*Fagus*), with the familiar American beech (*F.*



*grandifolia*) of eastern forests, the majestic cultivated European beech (*F. sylvatica*), and several less horticulturally known Chinese and Japanese species. While collecting at Lake Yuno, we encountered Japanese beech (*F. crenata*) growing on a small bluff above the lake.

A few days later, we encountered another impressive beech, *Fagus japonica*, with a height of some 75 feet, at the University of Tokyo Forestry Department Research Station, in Chichibu (west of Tokyo). In the understory were groves of Japanese pieris (*Pieris japonica*) and Japanese clethra, and a population of Japanese stewartia (*Stewartia pseudocamellia*) perched on a steep hillside, elongated and stretching for light among the competing trees. These species are among the most ornamental and desirable of the numerous plants that have come to our gardens from Japan. Seeing them together provided an opportunity to understand their growing requirements, while simultaneously appreciating their beautiful natural arrangements. A choice garden plant, Japanese stewartia is known for its exfoliating bark, large white flowers, and rich autumn leaf colors.



Photos: Courtesy Anthony Aiello



We collected a second species of stewartia at the last location of the expedition, the Hokkaido University Forestry Station, in Wakayama Prefecture on the Kii Peninsula, the southernmost tip of Honshu. This mountainous region is among the wettest areas in Japan, receiving upwards of 118 inches of annual precipitation. Within this rich, mixed broadleaf-evergreen forest, we made collections from several massive trees of tall stewartia (*Stewartia monadelphra*), with slick, orange-red bark that grew up to 40 feet tall on steep mountain slopes. The two Japanese species of stewartia highlight another North America-Asia disjunction, reminding us of the mountain stewartia (*S. ovata*) of the mountainous southeastern U.S., and Virginia stewartia (*S. malacodendron*), a southeastern coastal representative.

Surrounded by disjunct species-viburnum, beech, stewartia, and maple—we could not help but notice the genera where there is diversity in Asia, but no other temperate counterparts. On one of the days in Wakayama, we also found three species of enkianthus (a genus in the heath family, Ericaceae) related to the more familiar white enkianthus (*Enkianthus perulatus*). Enkianthus is well-represented by six species in Japan and seven species in

China, but with none in North America. It was remarkable to see three distinct species growing together on one mountainside. Earlier on the trip we collected two other species, bringing our total effort to five of the six Japanese species.

In contrast to the species diversity of Enkianthus, we made two horticulturally and botanically interesting collections at Wakayama—the wheel tree (*Trochodendron aralioides*) and Japanese umbrella pine (*Sciadopitys verticillata*). Both of these are worthwhile as garden curiosities, but they are taxonomically isolated, so it was fascinating to see these evolutionary “orphans” juxtaposed with those that are species rich with close relatives in both Asia and North America.

If seeing is believing, then this collecting trip to Japan certainly brought me true horticultural religion. The cultural and botanical experiences on these expeditions are priceless; and the ability to see plants growing in their natural environment provides a deeper understanding of their horticultural needs, which we can translate into growing them at the Arboretum.



# Botany for Beginners -Part III (The Basics of Flowers)

PAMELA OLSHEFSKI, *Curatorial Assistant*

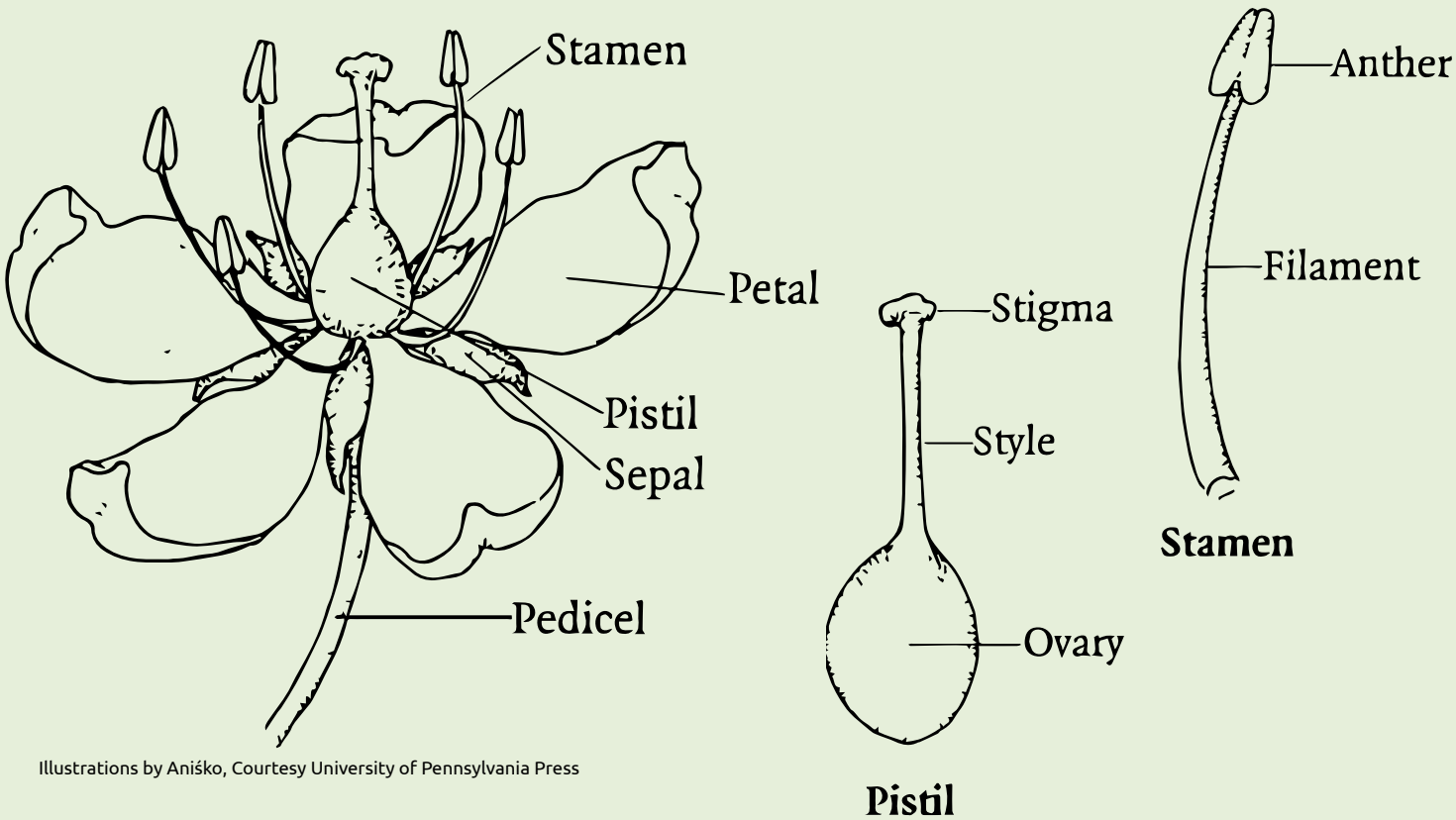
For centuries, humans have been intoxicated by the beauty of flowers. From poetry, to music and artwork, flowers play an enormous role in our lives. To quote Hans Christian Anderson, “Just living is not enough...one must have sunshine, freedom, and a little flower.”

In botany, angiosperms (flowering plants) are the largest and most diverse group in the plant kingdom. Angiosperms produce seeds enclosed in the ovary of a flower. Flowers play an important role in the botany of plants and are how plants are classified into families.

So now that you have learned how to identify different shapes of leaves in lesson 1 (*Seasons*, Fall 2018), and how to identify the difference of some common conifers (gymnosperms) in lesson 2 (*Seasons*, Winter/Spring 2019), it’s time to tackle the all-important lesson of flowers.

We will break down the parts of the flower into four whorls. Each whorl moves from the outermost layer of the flower to the innermost layer. Observing the differences in number, shape, and color of these four parts will help to identify what type of flowering plant you have.

- Whorl one is the outermost protective layer of a flower. This layer is known as the calyx and is made up of sepals. In many flowers the sepals are small, green, and almost leaf-like in appearance. However, in the case of some plants like *Cornus florida* (*flowering dogwood*), the sepals are very showy and often get mistaken for petals.
- Whorl two is the inner layer known as the corolla. The corolla is made up of the petals of the flower. The flower petals are often showy, colorful, and ranging in size. Petals are a flower’s way of attracting pollinators to the plant.
- Whorl three is the inner layer made up of the stamens. The stamens contain pollen and are considered the male reproductive flower part. The stamen is made up of the stalk, known as a filament, and the top, known as the anther. The anther is the pollen-bearing source.
- Whorl four is the innermost whorl of the flower. It is known as the pistil which is the female reproductive flower organ. This complex organ typically consists of the stigma, style, and the ovary.



Illustrations by Aniśko, Courtesy University of Pennsylvania Press



## Catching Up on Tree Care

ANTHONY AIELLO, *The Gayle E. Maloney Director of Horticulture and Curator*

Photo: Paul W. Meyer

At the risk of stating the obvious, as an arboretum, our primary function is to serve as a museum of plants that focuses on trees and shrubs. And, as curator, my role is to oversee the composition, care, and use of these living collections. Of the 11,985 accessioned plants throughout the Arboretum (not including those in the greenhouse), 4,127 of these are classified as trees, ranging from small, recently-planted seedlings, to vigorous teenage and maturing trees, all the way to our impressive veteran specimens. Of these 4,127 trees, 63% have been planted since 1980 and approximately 50% of them have been planted in the past 25 years.

As a museum, our tree collection is insured, and based on a valuation that we conducted in 2013, they have a total estimated value of \$25 million, making them one of the top assets of the Arboretum. As with any asset, they require care as they age, and it is the gap between our existing resources and our overall maintenance needs that is the deferred maintenance for tree care. As an example, if we were able to spend 1% of the total value annually on the care of this collection, then we should be spending \$250,000 each year on tree care. The good news is that we have a full-time staff member plus an intern, and we are also able to contract out for arboriculture work throughout the year. This budget, however, is significantly less than \$250,000, so as our annual maintenance budget lags, the deferred maintenance continues to accumulate.

Even though we are able to perform a tree work in-house and with the help of contractors, there is still a backlog of work that needs to be completed. Our next step is to put a value on this backlog of deferred work. We currently have a proposal to assess all of the trees in the collection by first, measuring the sizes of all of the trees and developing a ranking based on the potential hazard that they pose, and then estimating tree longevity and developing maintenance recommendations. We will need to raise funds to complete this two-phased assessment, and once these are secured, we can move to develop a comprehensive tree management plan.

Simultaneously, we are advancing our veteran tree care work, in other words, focusing on the management of our signature specimens. The loss of the Bender oak and slow decline of the Engler beech served as a wake-up call to carefully monitor our existing veteran trees. A step towards this was an arborist "round-table" in January, during which a group of internal and external experts came up with recommendations for our 12 top trees. Based on this, we are moving ahead with work on seven of them and plan to continue the round-table process next year.

Our tree collection is the foundation of the Arboretum and is a fundamental aspect of our mission. It is essential to preserve, maintain, and grow our collection in order to achieve the goals of research, horticulture, and education. With continued efforts to focus and improve our arboriculture we can ensure that this resource continues for future generations.



# Growing the Garden Railway

CHRISTINE PAPE, *Editor*

Since 1998, the Garden Railway has been a favorite at the Arboretum and a mainstay for summer and holiday visitation. While visitors to the exhibit can’t miss the trains and buildings made of natural materials, the surrounding landscape is often overlooked. This carefully maintained space isn’t merely a backdrop for the trains and buildings, but a unique and special garden unto itself.

Chief Horticulturist Vince Marrocco has been overseeing this garden since 2015 when Horticulture Section Leader Iana Turner retired. The area includes a mixture of annuals, perennials, and woody plants, all carefully placed to complement the buildings and tracks. When he first took over the site, Vince saw an opportunity to take the landscape in a different direction and envisioned integrating the buildings into the garden in a more naturalistic way. While the buildings (which have been created by the firm Applied Imagination since the exhibit’s inception) are works of art, Vince aimed to shift some of the focus to the surrounding gardens. Planting in this area involves “miniscaping,” or using plants that are in scale with the miniature buildings. Some sources sell plants specifically for this purpose, while sometimes dwarf varieties of common plants are used. Observant visitors may notice a groundcover of creeping thyme in front of one of the buildings that creates the look of a flowering meadow, while a planting of Scotch moss around the Philadelphia Museum of Art creates the illusion of a lush lawn. Finding sources for these “tiny plants” can be challenging, and just like in your own backyard, the plants often perform too well, growing beyond their intended scale. Plants are pruned often or have to be replaced when they outgrow the space.

All of these plantings are sited to complement the village of miniature Philadelphia-inspired buildings that are augmented each summer with seasonally themed buildings (this year’s theme is Great American Lighthouses). Over the years, many of the original buildings that had been consistently maintained reached the point where they needed to be replaced. Thanks to generous funding from donors, new versions of several houses have been purchased and installed. Applied Imagination returns each spring with the season’s themed buildings and assists in setting up the display as well as with maintaining the tracks, bridges, and trestles. While Vince also gets helps from interns and volunteers, he likes to install each of the buildings himself. He mounts each building onto a wood base, leveling it into the ground, while using various rocks and stones to stabilize each building until it is perfect.

Photo: Paul W. Meyer

Photo: Marie Ingegneri



In addition to being used for stabilizing buildings, rocks and stones of various sizes serve as accent pieces and help create the appearance of a natural landscape. Vince maintains that it is this attention to detail that makes the display so special, all the way down to the rocks—and he should know. His fascination with rocks began when he helped rebuild a rock wall at the Royal Horticultural Society in London in 1990. When Applied Imagination first installed the exhibit in 1998, they gathered rocks and stones found around the Arboretum when creating the display. Since then, Vince has painstakingly reorganized the garden, for instance, gathering all the red shale he could find and using it to create a more realistic, natural-looking tunnel. The replica of the Arboretum’s Fernery is now surrounded by grouping of orange quartz which Vince used to create consistency in color and angles.

So on your next visit to the Garden Railway, take a moment to appreciate this meticulously maintained landscape, from the tiny plants, “meadows” and “lawns,” all the way down to the rocks. As Vince pointed out, “Often when we plant a tree, we think ‘This is going to be beautiful in 10 years.’ The Garden Railway landscape though, is one area in the Arboretum where we strive for instant gratification.” It’s safe to say that visitors are never disappointed.

## The World According to Vince Marrocco

CHRISTINE PAPE, *Editor*

While serving as Chief Horticulturist and maintaining the Garden Railway is a full-time job in itself, Vince Marrocco is also the Arboretum’s rosarian, overseeing the design, planting, and care of the rose garden. Vince first came to the Arboretum as an intern in 1989. After a stint at Pepsico in New York in the early ‘90s, he returned to the Arboretum in 1993 as a Horticulture Section Leader.

He was named rosarian in 2015, and at the same time assumed responsibility for the Garden Railway. Having watched the rose garden evolve over time, he was excited to manage this iconic Arboretum landscape. In the 1990s, a mixed planting scheme was introduced to provide more visual interest when the roses were not actively blooming. Roses planted at that time were chosen primarily for their disease-resistance and low maintenance characteristics. The downside was that most of the roses lacked fragrance. Today, with advances in propagation, more roses are being produced that are both disease-resistant and fragrant. “I want visitors to know that they are in the rose garden even with their eyes closed,” Vince says.

After more than 26 years on the job, maybe it’s his humor and sharp wit that keep Vince going, but he says he loves it more than ever. “I am so lucky to work in this beautiful place.” He laughs when asked what his favorite part of his job is. “Believe it or not, I love to edge. A garden with a beautiful, crisp edge hides the imperfections within the bed.”



Photo: Paul W. Meyer

*“Vince has made great strides in raising the level of horticulture in the Rose Garden and the Garden Railway. He is remarkably hard-working and the quality of horticulture and his attention to detail are evident in the level of presentation he brings in these highly visited garden areas.”*

– Anthony Aiello, The Gayle E. Maloney Director of Horticulture and Curator



# Staff Development

LUCY DINSMORE, *Azalea Meadow Horticulturist*

The Morris Arboretum’s mission has always championed staff development and encouraged and supported opportunities for staff to grow. There are two endowments that fund staff development, and a robust program that enables individuals across departments to pursue their professional goals. Staff have opportunities to attend conferences and symposia, seek higher education, and participate in plant collecting, staff exchanges, and international travel.

Many staff have achieved their graduate degrees at Penn while working full-time. Three current horticulturists have received, or are working towards, their Masters of Environmental Studies. While the Arboretum’s endowments do not fund these endeavors, the tuition benefit offered through the University of Pennsylvania is a valuable resource for all staff.

Staff in the Horticulture Department are encouraged to pursue plant collecting as one way of realizing the Arboretum’s research goals. In 2017, Chief Horticulturist Vince Marrocco collected plants in Azerbaijan. More recently, the McCausland Natural Areas Horticulturist Jess Slade went to North Carolina on a plant collecting trip, joining representatives from a number of other institutions, including Longwood, Mt. Cuba, and Natural Lands. Plant collecting is an incredible way to see native plants in their habitats and create collections to add to the Arboretum’s portfolio.

The Morris Arboretum also supports staff exchanges and travel opportunities for staff and foreign colleagues alike. Botanical Scientist Cindy Skema will be traveling this summer to complete work researching the evolutionary history and systematics of an under-studied group of tropical plants, the Dombeyoideae (a subfamily of Malvaceae). The Arboretum is funding her travels to Paris to work at the natural history museum (Muséum Nationale d’Histoire Naturelle) with her colleague Dr. Timothée Le Péchon of Meise Botanic Garden. Cindy will maximize her collaboration to develop new research skills, particularly new lab techniques, which she’ll apply to the work on the flora of Pennsylvania.

Assistant Director of Continuing Education & Penn Student Outreach Bryan Thompson-Nowak benefited from professional development through a combination of funding from Morris Arboretum and the Chanticleer Scholarship (of which he was a recipient of in 2018). He completed a week-long executive education course in 2018 at the Kellogg School of Management at Northwestern University, where he learned about data analytics. In April he visited Oxford, Cambridge, the Royal Horticultural Society, and the Royal Botanic Gardens, Kew. He’s planning to parlay this knowledge and utilize it at the Morris Arboretum.

Lastly, several horticulture staff have benefited from a staff exchange program the Morris Arboretum has with Windsor Great Park. The Royal Landscape Exchange is a reciprocal staff exchange between the Arboretum and the Royal Landscape in Windsor, England. Now in its 7th year, the exchange allows horticulturists and staff from both institutions to travel and work alongside each other, study plant collections, share information and histories, learn about different tools and techniques, and immerse in another culture, climate, and landscape. Louise Clarke was the first horticulturist from the Morris Arboretum to go in 2012, after which I went in 2014, and most recently Jess Slade went in 2018. For me, it was a paradigm shift learning their management practices, planting methods, and preferred tools for the job. Since then, we’ve modified our tool purchases for more battery-operated styles.

Travels like these are important ways of staying abreast of advances in the field. There is much to be gained from an exchange with another institution. Sharing knowledge is key, both for Arboretum staff to share what they’ve learned, and for disseminating the wealth of knowledge that the Morris Arboretum has with other institutions. These opportunities are about branching out, gaining perspective, and recharging one’s batteries in order to bring that energy back to the Arboretum.



Photo: Graham Stone

# After B.K.S. Iyengar

Last autumn marked the 30<sup>th</sup> anniversary of the installation of the sculpture *After B.K.S. Iyengar* at the Morris Arboretum. Created by Penn professor Robert Engman who passed away in 2018, the inspiration for the piece was the great Indian yoga master B.K.S. Iyengar.

The sculpture was dedicated in the fall of 1988 as part of the restoration of the Step Fountain, and is on long-term loan from Marian and Marvin Garfinkel. Iyengar was at the dedication and performed a moving yoga demonstration. Morris Arboretum Advisory Board of Managers member Carole Haas Gravagno, who was there, noted, “B.K.S. Iyengar’s demonstration was the most miraculous display of intelligence of the body, the mind, and the spirit.”

Dr. Marian Garfinkel studied yoga in India and throughout the world for more than 45 years. She is a longstanding member and friend of the Arboretum, where she also taught yoga classes. Dr. Garfinkel is a firm believer in the efficacy of the methods of B.K.S. Iyengar and believes through yoga, under the guidance of an experienced teacher, one can maintain good health and well-being.

This year, the restoration of the sculpture’s plinth will be undertaken and the sculpture will be cleaned and waxed. Over the years it has become a beloved part of the Arboretum landscape. We greatly appreciate the generosity of the Garfinkels in sharing this piece with the Arboretum community.

Photos: Paul W. Meyer and Morris Arboretum Archives



*“Don’t live yesterday, live today. Tomorrow will be a new day.”*  
– B.K.S. Iyengar

Pictured below (left to right): Sculptor Robert Engman, Marian Garfinkel, B.K.S. Iyengar, India’s Ambassador to the United States P.K. Kaul, Arboretum Director William Klein





# Summer Classes



Summer classes are in full swing! Learn a new skill, broaden your horizons, and keep your mind engaged. We have something for every interest and age group. For a complete course brochure or to sign up online visit [bit.ly/MorrisClasses](http://bit.ly/MorrisClasses) or call (215) 247-5777, ext. 125.

## Yoga in the Garden - Ten Enchanted Evenings

Ten Tuesdays: May 28, June 4, 11, 18, 25, July 9, 16, 23, 30, August 6, 7:00–8:15 p.m.

**Members: \$180 for 10 sessions, \$100 for five**  
**Non-members: \$200 for 10 sessions, \$120 for five**  
**Walk-ins for single session: \$25, cash or check only**

The incredible beauty of summer nights at the Arboretum provides the backdrop for this unique opportunity to learn the basics of yoga: breathing, mindfulness meditation, balance, strength, flexibility, core awareness, and deep relaxation surrounded by the garden's peaceful ambiance. All are welcome, including beginners. **Please bring a yoga mat and wear comfortable clothes. Refunds will only be given five business days before the first session of the course. No class or attendee substitutions are permitted. Meet at the Visitor Center.**

## Painting with Watercolor and Colored Pencil

Three Saturdays: June 8, 15, 22, 11:00 a.m.–2:00 p.m.

**Members: \$125, Non-members: \$135**

What happens when you combine two very different mediums to paint a flower, fruit, or vegetable? First, a flat, one-color, simple shape becomes the underpainting. Then layering and blending with wax-based colored pencils adds realistic depth to the painting. Fruits, vegetables, and other plants will be provided. Please bring the following supplies: sharpened Prismacolor Premier colored pencils packaged in a black tin box that says "smooth color laydown." Do not purchase "water soluble," which also comes in a black tin box. Seven tubes of Cotman watercolors: Cadmium Yellow, Cadmium Yellow Light or Lemon Yellow, Cadmium Red, Permanent Rose, Ultramarine Blue, Cerulean Blue, and Chinese White. Also bring a pencil sharpener, a small container for water, a palette for mixing watercolors, a watercolor brush, and a small pad of either: Strathmore Bristol, smooth finish, or Strathmore Mixed Media, vellum surface. Michaels and A.C. Moore should have these supplies. **Please bring your lunch.**

## Birding at the Arboretum: A Local Hotspot

Wednesday, June 5, 8:00–11:00 a.m.

**Members: \$25, Non-members: \$30**

Join birding expert Ruth Pfeffer as we visit the Arboretum's natural areas including wetlands, meadows, and the woodlands along the Wissahickon Creek. We will see resident birds as well as migrating raptors, warblers, and sparrows. If time permits, we will also have a chance to look for birds at Bloomfield Farm, an area of good birding across the street from the public garden entrance. These sessions are for beginning or experienced bird watchers. **Bring your binoculars. Park in the meadow next to the Arboretum entrance kiosk and meet Ruth there. You may sign up for one or multiple sessions.**

## Crepe Paper Icelandic Poppies

Sunday, June 9, 12:00–3:00 p.m.

**Members: \$55, Non-members: \$60**

This class will guide you through the sculpting and assembly techniques of paper floristry as you make beautiful crepe paper Icelandic poppies. We'll begin with a brief botanical study of the elements of poppies and using a range of colorful, high-quality papers, we'll move on to form the intricate centers, lovely petals, and end with finishing the stems for a beautiful, realistic appearance. You will leave the class with two poppies, templates and enrollment in an Icelandic poppy video course so that you can make more at home.



# Growing Minds

## Fun, Engaging Classes for Kids!

### Insect Investigators (Ages 6–10)

Saturday, July 20, 11:30 a.m.–1:30 p.m.

**Members: \$25, Non-members: \$30**

People who study insects are known as "entomologists" and the work they do is very important to people and the environment. Join us as we learn what it means to be an entomologist, what tools they use, and how to identify some of our insect friends at the Arboretum. This class will begin with a classroom session followed by hands-on insect exploration in the natural areas of the Arboretum. **Please have your children dress in clothing appropriate for hiking in potentially wet and muddy areas. Long pants are suggested. Feel free to bring your own butterfly nets if you have them!**

### BioEYES: Your Watershed, Your Backyard (Ages 7–12)

Saturday, July 27, 10:30 a.m.–12:30 p.m.

**Members: \$30, Non-members: \$35**

Come learn about your local watershed and the basic principles of environmental science in the Arboretum. In this class, kids will participate in a citizen science study of water quality via water chemistry testing and observations of zebrafish embryos, a model organism used in current research. BioEYES is a non-profit partner of the University of Pennsylvania which provides K through 12 students hands-on, inquiry-based learning in fun and engaging ways using zebrafish and STEM curriculum. **Please have children dress for outdoor hiking on trails and wet areas. Parents should park in the meadow to the left of the entrance kiosk. The instructor will check in students and lead them to the wetlands area.**



### Art Explorations in Nature (Ages 3–5)

Four Thursdays, August 1, 8, 15, 22, 10:30–11:30 a.m.

**Members: \$85, Non-members: \$100**

Encourage your child to engage with the outdoors through discovery and creativity in this four-week art series. We will observe the natural world, find joy in the process, and create nature-inspired art. From painting to printing to constructing, children will experiment with a variety of natural materials to develop self-expression and fine motor skills. Each session will include a brief exploration of the Arboretum, a story or an introduction to the weekly theme, and time for making their own art.

### Exploring Butterflies and Moths

Saturday, August 3, 10:00–11:30 a.m.

**Members: \$25, Non-members: \$30**

Families can join naturalist Pam Newitt for a morning of deep exploration. After learning about this fascinating and beautiful group of insects, we will head outdoors to observe and catch some of these jewels that feed on the flowers of the Morris Arboretum. All butterflies and moths caught will be released unharmed. **Please dress for the weather: a hat, sunscreen, and insect repellent are suggested. Feel free to bring your own butterfly nets if you have them!**





# Moonlight & Roses

## June 7, 2019

It's not too late to reserve a space at the most popular garden party of the year! *Moonlight & Roses*, the Morris Arboretum's annual fundraising gala, begins with cocktails and hors d'oeuvres in the Rose Garden at 6:00 p.m., followed by dinner and dancing in the fabulous moonlit tent. The Morris Arboretum is delighted to honor Mary and Richard Graham and The Haverford Trust Company at this year's event. Sarah Salmon and Sally Gendler are co-chairing, along with Edith R. Dixon as honorary chair. Reservations are required and space is very limited.

Register no later than May 29. Visit [morrisarboretumgala.org](http://morrisarboretumgala.org) for more information.



Photo: Mark Stehle

# Where Will Your Card Take You This Summer?



Denver Botanic Garden

Your Morris Arboretum membership card can take you places far beyond our garden gates. With your valid membership card you can receive free or discounted admission to more than 320 gardens across North America through the American Horticultural Society's Reciprocal Gardens Program (RAP). For a complete listing of participating organizations visit: [ahsgardening.org/gardening-programs/rap](http://ahsgardening.org/gardening-programs/rap). If you wish to have a hard copy of the RAP Directory, they are available for purchase at The Shop for just \$2.

The guidelines below are taken directly from the American Horticultural Society's website to help you plan a visit to a participating garden:

- We recommend that you call all gardens prior to your visit. Some gardens have exclusions for special events or exhibits, or if you live within 90 miles of the garden\*, etc. Each garden has its own unique admissions policies and hours of operation.
- Present your current Morris Arboretum membership card at the admissions counter or gift shop to receive the RAP benefit(s) listed for that garden. Some gardens may require a photo ID.
- \*The 90-mile exclusion allows gardens to exclude members of other gardens within 90 miles of their location from receiving their reciprocal benefit(s). Please contact the garden you plan to visit to inquire about this guideline.
- Remember that the institutions you visit rely on admissions and donations to maintain their collections and gardens for all to enjoy. Please support them by visiting their gift shop or making a contribution.

# Tributes & Memorial Gifts

The Morris Arboretum is grateful to the following donors who made tribute and memorial gifts between November 1, 2018 and March 31, 2019.

In recent months there have been an extraordinary number of gifts made in honor of Paul W. Meyer upon his retirement. Thank you to the many members and friends who have paid tribute to Paul with a contribution. In order to present a complete list, donors will be acknowledged in a future issue of *Seasons*.

### *In honor of Larry Arrigale's 60<sup>th</sup> Birthday*

Lawrence M. Arrigale &  
Thomas H. Keels  
Miriam & Brian Boland  
Charles Culman  
Barbara & Anthony Elefante  
Phiz Elefante  
Karen Fiore  
Mindi Ginsberg  
Noel Hanley  
Charlie Head & John Faggotti  
Elisa Hibbs

### *In honor of Harriet Day*

Mary Jo & David Johnson  
Karen M. Kreller  
Anna Maria Leadem  
Jean F. Marakowski  
Paul Puccio  
Janice & Thomas Roddenbery  
Debra L. Rodgers & Paul W. Meyer  
Cindy Rosenberg  
Bonnie Schuman  
Mildred & John Spear  
Anne & Baird Standish  
Mary Standley  
Anne C. Swoyer & Bill Jacobsen  
Maria Thompson  
Alison & Brad Thornton  
John Whitenight

### *In honor of the 35th wedding anniversary of Joan and Liv Biddle*

Janet & Matthew Stern

### *In memory of Oliver Biddle*

Lee Laden

### *In memory of Elizabeth Bast Gagné Brennan*

Pamela & W. Roderick Gagné

### *In memory of Peter Bittenwieser*

Terry Marek

### *In memory of Judith Campbell*

Lee Laden

### *In honor of Lovina B. Carroll*

J. Douglas Carroll

### *In memory of Henry Cecil*

Lee Laden

### *In honor of Sandra Clapham*

Robert Clapham

### *In memory of Priscilla Kates Colan*

Juliann & Frank Pondo

### *In honor of Susan & Moe Feldman*

Donna Gunia  
Susannah McQuillan

### *In memory of Denise Foster*

Anonymous

### *In memory of John J. Gatti*

Sabina Gatti

### *In memory of Margaret Gill*

Lee Laden

### *In memory of Harold & Eleanor Greenwald*

Philip Greenwald

### *In memory of George Z. Heimbach*

Anonymous

### *In memory of Mary Randall Hopkins*

Barbara & John Dundon  
Patricia Fischer  
Donna Hecker  
Sarah H. Kierzkowski  
Tracey Miles  
Candace B. Richards  
Deborah SchAAF  
Anna Coxé Toogood

### *In memory of Diane Kingsley*

Jodi Harro & Wayne Gammon

### *In memory of Evelyn Sholtes Kritchevsky*

Amy Campbell  
William Kratzke

### *In memory of Charles W. Lake*

Maryallis Atkinson  
Brian Dvorak  
Cecilia & Thomas Friend  
Diane & Charles Gross  
William Jacobs  
Theresa Kruth & family  
John V. McGrory  
Constance Mueller  
Gretchen Poliero

### *In memory of Joan F. McCracken*

James C. McCracken

### *In memory of Joan N. McCue-Berger*

Linda D. Berger

### *In honor of Joyce Munro*

The Outdoor Gardeners

### *In honor of Linda Mutch*

Wonderful Women Who Walk

### *In honor of Susan W. Peck*

Nancy & George† Peck

### *In memory of Lucille Roland*

Sharon & J. Christopher Miller

### *In memory of Oliver Richard Rothman*

Lee Laden

### *In memory of Donald Scales*

Donna Hecker

### *In honor of Helen Stephan*

Sandra Stephan

### *In memory of James Francis Wallace*

Lee Laden

† Deceased



summer events

JUNE

Early Bird Openings  
Saturdays & Sundays, 8:00 a.m.

Start your day with an early morning visit to Morris Arboretum. The garden opens at 8:00 a.m. on Saturdays and Sundays through September.

Saturday Morning Live Tour:  
Small Trees for Small Spaces  
Saturday, June 1, 11:00 a.m.

Join a guided walking tour to learn more about the Arboretum’s smaller specimen trees that make a big impact. These trees have many special features, such as interesting form, spectacular bark, and great flower and leaf color. Find one that will pop! in your garden.

Sunday Regularly Scheduled  
Tours  
Sundays, April–October, 11:00 a.m.

Meet a knowledgeable guide outside The Shop/Widener for a unique tour of the Arboretum. Tours will be designed around the interests of the attendees. No reservations are required.

Late Night Wednesdays

Garden open until 8:00 p.m., June-August.

Photo: Paul W. Meyer



Storytime at the Arboretum  
Friday, June 7, 10:30–11:00 a.m.

Join us for fun and engaging reading sessions with local librarians. Each session is tailored to the changing seasons and complements the natural setting of the Arboretum. Storytime is held outdoors in nice weather, at the Outdoor Children’s Classroom, next to the Widener Visitor Center. In the case of inclement weather, Storytime is held in the side tent or classroom at the Visitor Center.

Moonlight & Roses  
Friday, June 7, 6:00–11:00 p.m.

See page 18 for more information.

MORE Hidden Gems Tour  
Saturdays, June 8 & 22, 11:00 a.m.

Join knowledgeable guides for an all new walking tour highlighting garden features not often discovered on an average visit. These garden gems include a combination of structures, sculptures, spaces, trees, and vistas. Tours begin at Widener Visitor Center.

Summer Evening Sculpture Tour  
Wednesday, June 12, 6:30–7:30 p.m.

Join an experienced guide to discover fine examples of public art that complement the Arboretum’s landscape and plant collection. Tours begin at Widener Visitor Center.

Springfield Mills Demonstration  
Day at Bloomfield Farm  
Sunday, June 16, 1:00–4:00 p.m.

Historic Springfield Mills at Morris Arboretum is restored and stone-grinding corn for meal and flour. Come and explore revolutionary technology, local history and a beautiful setting along the Wissahickon Creek. Guided tours.

Circus Week at the Garden  
Railway  
Saturday, June 29–Sunday, July 7

Listen for the call of the ringmaster as you watch the colorful railroad cars bring the “Big Top” to the garden.

JULY

Late Night Wednesdays

See June for details.

Early Bird Openings  
Saturdays & Sundays, 8:00 a.m.

See June for details.

Saturday Morning Live Tour:  
Hidden Gems  
Saturday, July 6, 11:00 a.m.

This month’s featured tour includes garden gems that are off the beaten path or hidden to most visitors, plus a few that are “hidden” in plain view. Tours begin at Widener Visitor Center.

Sunday Regularly Scheduled  
Tours  
Sundays, April–October, 11:00 a.m.

See June for details.

Summer Evening Water Features  
Tour  
Wednesday, July 10, 6:30–7:30 p.m.

Join an experienced guide to explore the beauty of fountains and waterfalls and discuss the evolution of the use of water in gardens. Enjoy the visual impact and calming effect of these delightful garden features. Tours begin at the Widener Visitor Center.

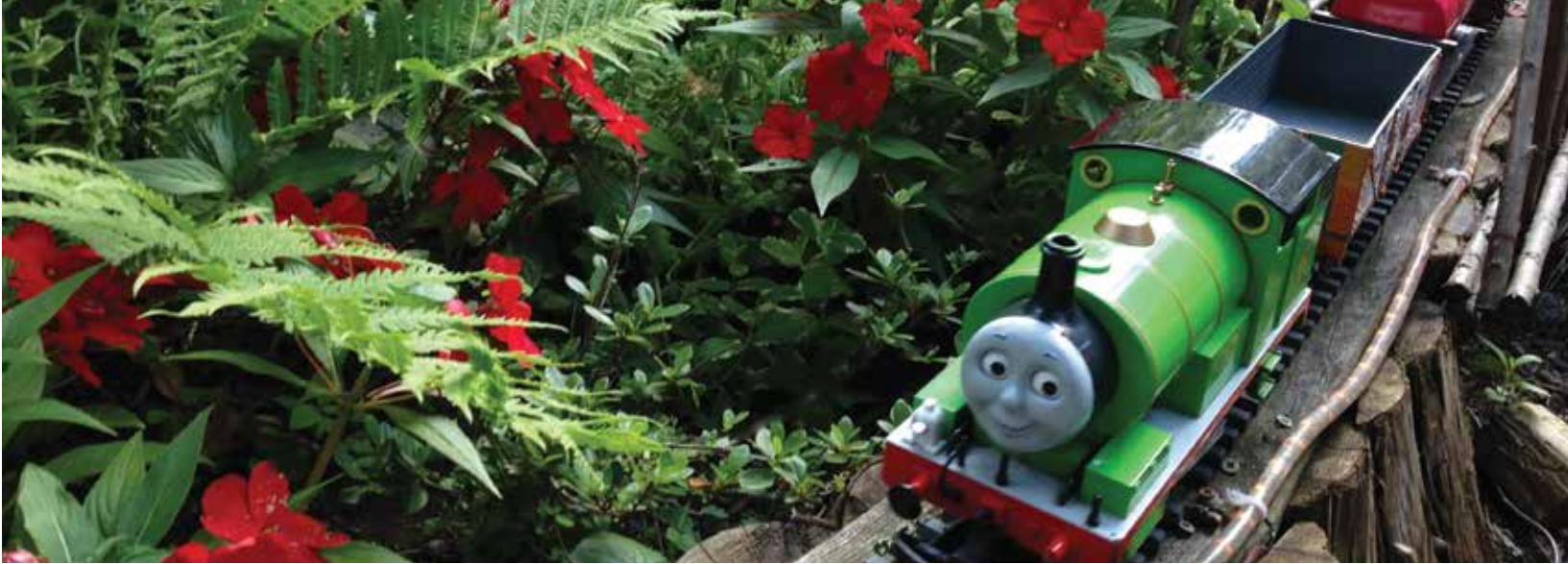


Photo Courtesy: Bachmann Trains

Founders’ Summer Ice Cream  
Social  
Thursday, July 11, 6:30–8:30 p.m.

Celebrate the birthday of Arboretum founder, John Morris, with ice cream, music, and merriment. Enjoy the a capella stylings of the Late Entry Barbershop Quartet. Refreshments included with ticket price. Member adults \$5, member children (3-17) \$2; non-member adults \$19, non-member children \$10. Visit morrisarboretum.org for tickets.

Storytime at the Arboretum  
Friday, July 12, 10:30–11:00 a.m.

See June 7 for more information.

Thomas the Tank Engine & Friends  
at the Garden Railway  
Saturday, July 13 & Sunday, July 14

Look for your favorite train characters among the whole steam engine gang from Sodor as they take over the railway for the weekend.

Springfield Mills Demonstration  
Day at Bloomfield Farm  
Sunday, July 21, 1:00–4:00 p.m.

See June 16 for more information.

Commonwealth Classic Theatre  
presents William Shakespeare’s  
Measure for Measure  
Wednesday, July 24, 6:30 p.m.

Join us in exploring the questions that lay at the passionate heart of William Shakespeare’s timeless and timely work. Garden admission is “pay what you will” after 4pm.

AUGUST

Storytime at the Arboretum  
Friday, August 2, 10:30–11:00 a.m.

See June 7 for more information.

Early Bird Openings  
Saturdays & Sundays, 8:00 a.m.

See June for details.

Saturday Morning Live Tour:  
Water Features Tour  
Saturday, August 3, 11:00 a.m.

See July 10 for more information.

Sunday Regularly Scheduled  
Tours  
Sundays, April–October, 11:00 a.m.

See June for details.

Late Night Wednesdays

See June for details.

Thomas the Tank Engine & Friends  
at the Garden Railway  
Saturday, August 10 & Sunday, August 11

See July 13 for more information.

Summer Evening Hidden Gems  
Tour  
Wednesday, August 14, 6:30–7:30 p.m.

See July 6 for more information.

Springfield Mills Demonstration  
Day at Bloomfield Farm  
Sunday, August 18, 1:00–4:00 p.m.

See June 16 for more information.

SEPTEMBER

Early Bird Openings  
Saturdays & Sundays, 8:00 a.m.

See June for details.

Thomas the Tank Engine & Friends  
at the Garden Railway  
Saturday, September 7 & Sunday, September 8

See July 13 for more information.

Saturday Morning Live Tour:  
Great Trees  
Saturday, September 7, 11:00 a.m.

Stay cool under the canopy of some of the greatest trees at the Arboretum. Tours begin at Widener Visitor Center.

Sunday Regularly Scheduled Tours  
Sundays, April–October, 11:00 a.m.

See June for details.

MORE Hidden Gems Tour  
Saturday, September 14 & 28, 11:00 a.m.

See June 8 for details.

Springfield Mills Demonstration  
Day at Bloomfield Farm  
Sunday, September 15, 1:00–4:00 p.m.

See June 16 for more information.

Korean Culture Day  
Saturday, September 28, 1:00–4:00 p.m.

Celebrate traditional and modern Korean culture through music, food sampling and garden tours that highlight Korea’s native plants.





**Morris Arboretum**  
UNIVERSITY of PENNSYLVANIA

Non Profit Org.  
U.S. Postage  
PAID  
Philadelphia, PA  
Permit #7483

Photo: Amanda DeLeo



Who doesn't love a good microbe? The Shop is full of icky, slimy, colorful treasures that provide learning while also having fun! Cuddle up to a giant plush mosquito, complete with zipped pouches of disease and fever that this cute guy would like to share with you. You won't forget that bug repellent next time, will you?

There are also grow kits, bug abodes, nature magnifiers, slime, jars of ick, growing crystals, and so much more! Pick up a book full of outdoor and indoor ideas to quell those end of summer “I’m bored!” chants.

Even summer showers won't keep you inside because the kids will be singing in the rain while hoisting one of the many fun umbrellas available in The Shop. We even have an umbrella that changes color when it gets wet! So stop in The Shop on your next visit for everything cool for summer!